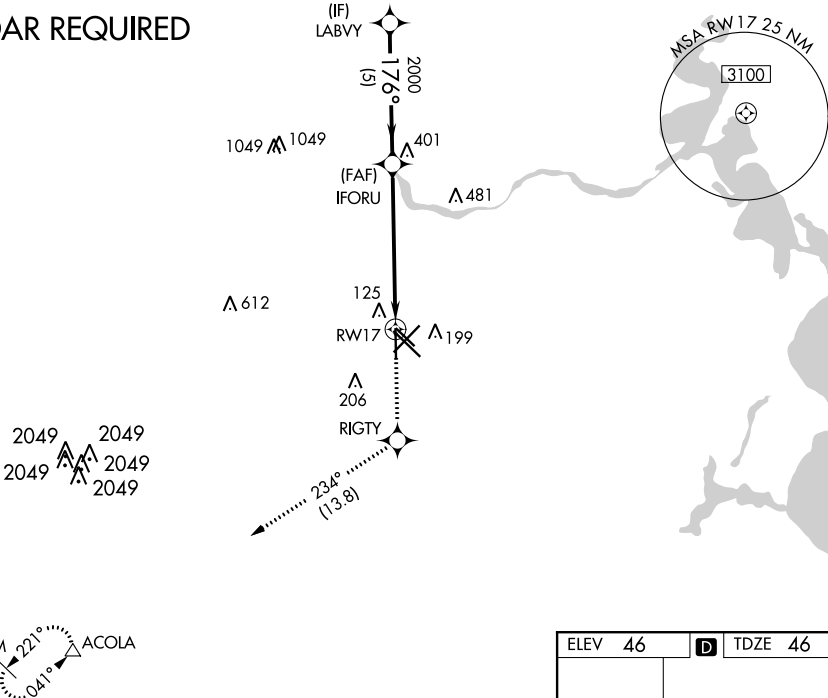


APP CRS	Rwy Idg	6000
176°	TDZE	46
	Apt Elev	46

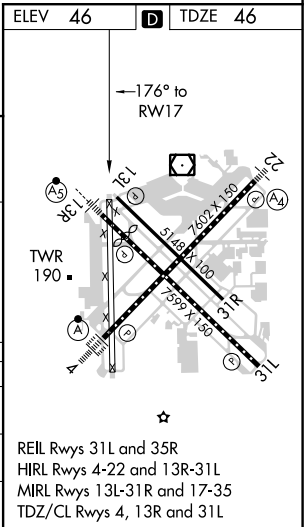
RNAV (GPS) RWY 17  
WILLIAM P HOBBY (HOU)

RNP APCH. ▼ For uncompensated Baro-VNAV systems, LNAV/VNAV NA below -15°C (5°F) or above 43°C (109°F). Helicopter visibility reduction below ¾ SM NA.		MISSED APPROACH: Climb to 3000 direct RIGTY and on track 234° to ACOLA and hold.		
D-ATIS	HOUSTON APP CON	HOBBY TOWER	GND CON	CLNC DEL
124.6	120.05 379.1 EAST 124.35 316.15 WEST	118.7 256.9	121.9	125.45
		CPDLC		

RADAR REQUIRED



LABVY		IFORU	3000	RIGTY	tr 234°	ACOLA
2000		2000				
GP 3.00° TCH 40				*1.6 NM to RW17		*LNAV only.
5 NM		4.3 NM	1.6 NM			
CATEGORY	A	B	C	D		
LNAV/VNAV DA	480-1½		434 (500-1½)			
LNAV MDA	580-1	534 (600-1)	580-1½ 534 (600-1½)	580-1¾ 534 (600-1¾)		
CIRCLING	580-1	534 (600-1)	580-1½ 534 (600-1½)	740-2¼ 694 (700-2¼)		



SC-5, 31 DEC 2020 to 28 JAN 2021

SC-5, 31 DEC 2020 to 28 JAN 2021