

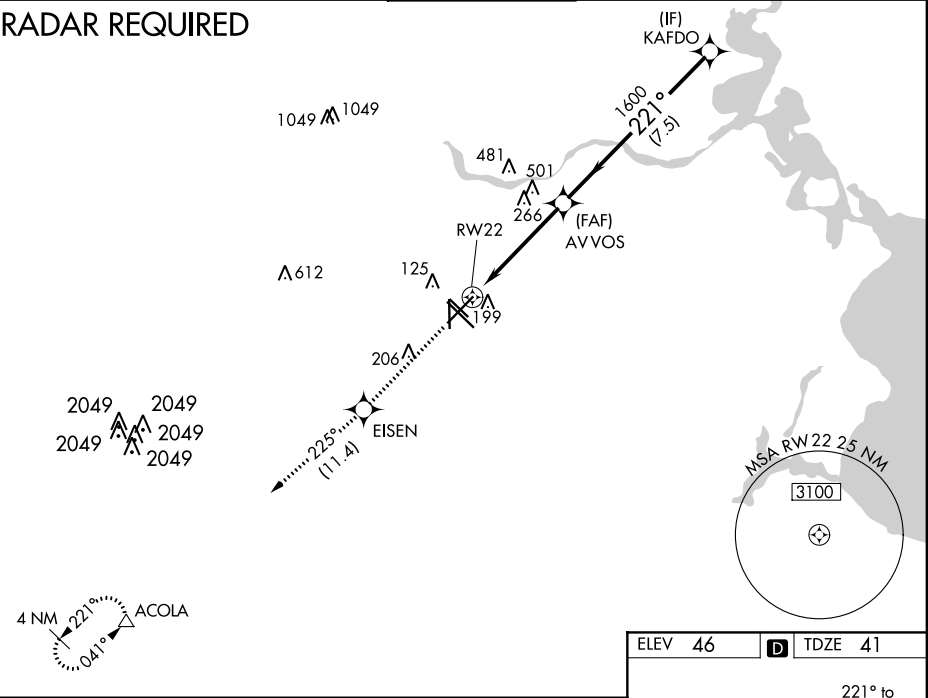
WAAS CH <b>65610</b> <b>W22A</b>	APP CRS <b>221°</b>	Rwy ldg <b>7602</b> TDZE <b>41</b> Apt Elev <b>46</b>
--	------------------------	---

RNAV (GPS) RWY 22

WILLIAM P HOBBY (HOU)

RNP APCH. Inop table does not apply to LPV, LNAV/VNAV all Cats, and LNAV Cat C. For uncompensated Baro-VNAV systems, LNAV/VNAV NA below -15°C (5°F) or above 48°C (118°F).		MALS 	MISSED APPROACH: Climb to 3000 direct EISEN and on track 225° to ACOLA and hold.		
D-ATIS <b>124.6</b>	HOUSTON APP CON <b>120.05 379.1 EAST</b> <b>124.35 316.15 WEST</b>	HOBBY TOWER <b>118.7 256.9</b>	GND CON <b>121.9</b>	CLNC DEL <b>125.45</b>	CPDLC

RADAR REQUIRED



3000

↑

EISEN

✦

225°  
tr

ACOLA

△

KAFDO

2000

AVVOS

1600

221°

1600

\* LNAV only.

\* 1.5 NM to RW22

RW22

1.5 NM

3.2 NM

7.5 NM

GP 3.00°  
TCH 52

CATEGORY	A	B	C	D	E
LPV DA	360-1		319 (400-1)		
LNAV/ VNAV DA	480-1½		439 (500-1½)		
LNAV MDA	580-¾	539 (600-¾)	580-1½ 539 (600-1½)	580-1¾ 539 (600-1¾)	580-2 539 (600-2)
CIRCLING	580-1	534 (600-1)	580-1½ 534 (600-1½)	740-2¼ 694 (700-2¼)	820-2¾ 774 (800-2¾)

