

VOR/DME BPT
114.5
Chan **92**

APP CRS
120°

Rwy Idg **6750**
TDZE **15**
Apt Elev **16**

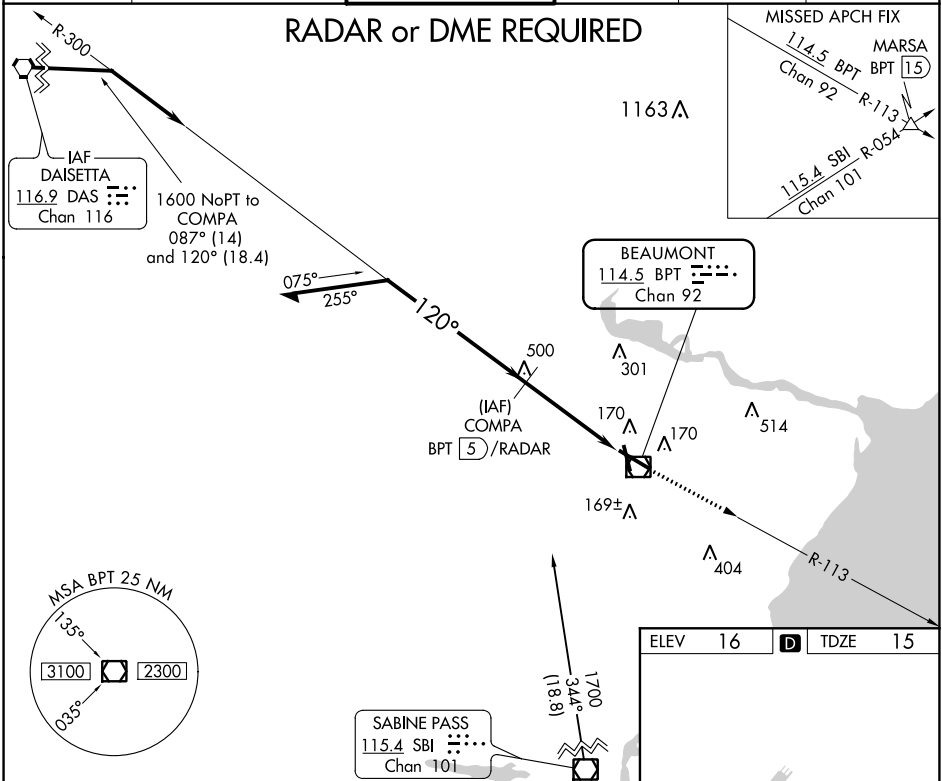
VOR RWY 12
JACK BROOKS RGNL (BPT')

⚠ For inoperative MALSR, increase S-12 Cat C/D/E visibility to RVR 6000. When local altimeter setting not received, use Orange County altimeter setting and increase all MDA 40 feet and S-12 Cat C/D/E visibility to RVR 4500 and Circling Cat E ¼ mile. For inop MALSR when using Orange County altimeter setting, increase S-12 Cat E visibility to 1½ mile.

MALSR
AS

MISSED APPROACH:
Climb to 1700 via
BPT R-113 to MARSA
Int/BPT 15 DME.

ATIS 126.3	HOUSTON APP CON 121.3 377.1	BEAUMONT TOWER* 119.5 (CTAF) 0	GND CON 124.85	CLNC DEL 118.3	UNICOM 122.95
----------------------	---------------------------------------	--	--------------------------	--------------------------	-------------------------



Remain within 10 NM

1700

300°

120°

1600

*Cat E procedure turn NA.

*COMPA
BPT (5) /RADAR

1700
BPT R-113

MARSA
△

BPT VOR/DME

4.2 NM

CATEGORY	A	B	C	D	E
S-12	420/24	405 (500-½)	420/40	405 (500-¾)	
CIRCLING	480-1	464 (500-1)	480-1½ 464 (500-1½)	580-2 564 (600-2)	820-2¾ 804 (900-2¾)

REIL Rwy 16, 30 and 34 0

HIRL Rwy 12-30, 16-34 0