


LOC I-LFK <b>111.3</b>	APP CRS <b>073°</b>	Rwy Idg TDZE Apt Elev	<b>5400</b> <b>287</b> <b>296</b>
---------------------------	------------------------	-----------------------------	---

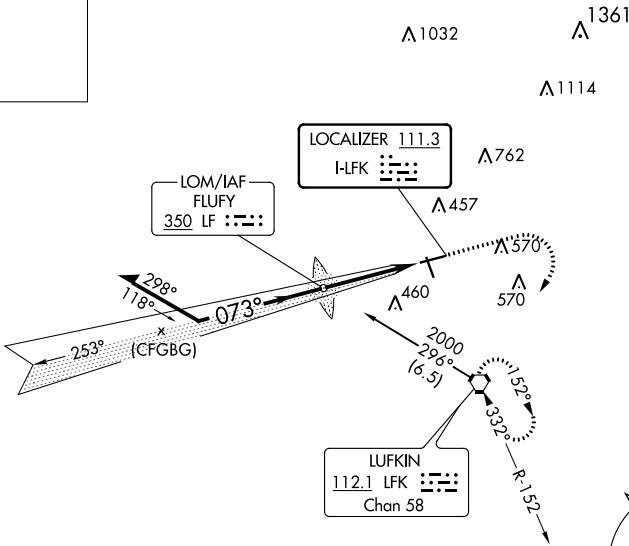

ILS or LOC RWY 7  
ANGELINA COUNTY (L'FK)

 Circling Rwy 16, 25 NA at night.		MISSED APPROACH: Climb to 800 then climbing right turn to 2000 direct LFK VORTAC and hold, continue climb-in-hold.
--	---	--

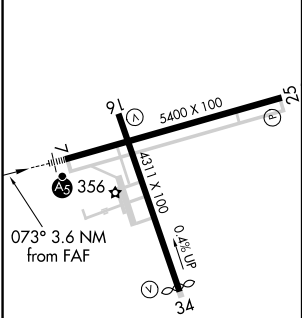
ASOS <b>120.625</b>	HOUSTON CENTER <b>125.175 285.575</b>	UNICOM <b>123.0 (CTAF) 0</b>
------------------------	--	---------------------------------

ALTERNATE MISSED APCH


FLUFY  
350 LF : :::



ELEV 296	TDZE 287
----------	----------



Procedure NA for arrival on LFK VORTAC  
airway radials 245 CW 354.

Remain within 10 NM				
FLUFY LOM				
2000				
253°				
073°				
1490				
1500				
3.6 NM				
GS 3.00° TCH 50				
CATEGORY	A	B	C	D
S-ILS 7	537-1/2 250 (300-1/2)			
S-LOC 7	680-1/2	393 (400-1/2)	680-5/8	393 (400-5/8)
 CIRCLING	740-1 444 (500-1)	760-1 464 (500-1)	880-1 1/2 584 (600-1 1/2)	1140-2 3/4 844 (900-2 3/4)

MIRL Rwy 7-25 and 16-34 0					
FAF to MAP 3.6 NM					
Knots	60	90	120	150	180
Min:Sec	3:36	2:24	1:48	1:26	1:12