

APP CRS  
3380

Rwy Idg	<b>4204</b>
TDZE	<b>286</b>
Apt Elev	<b>296</b>

## RNAV (GPS) RWY 34

ANGELINA COUNTY (LFK)

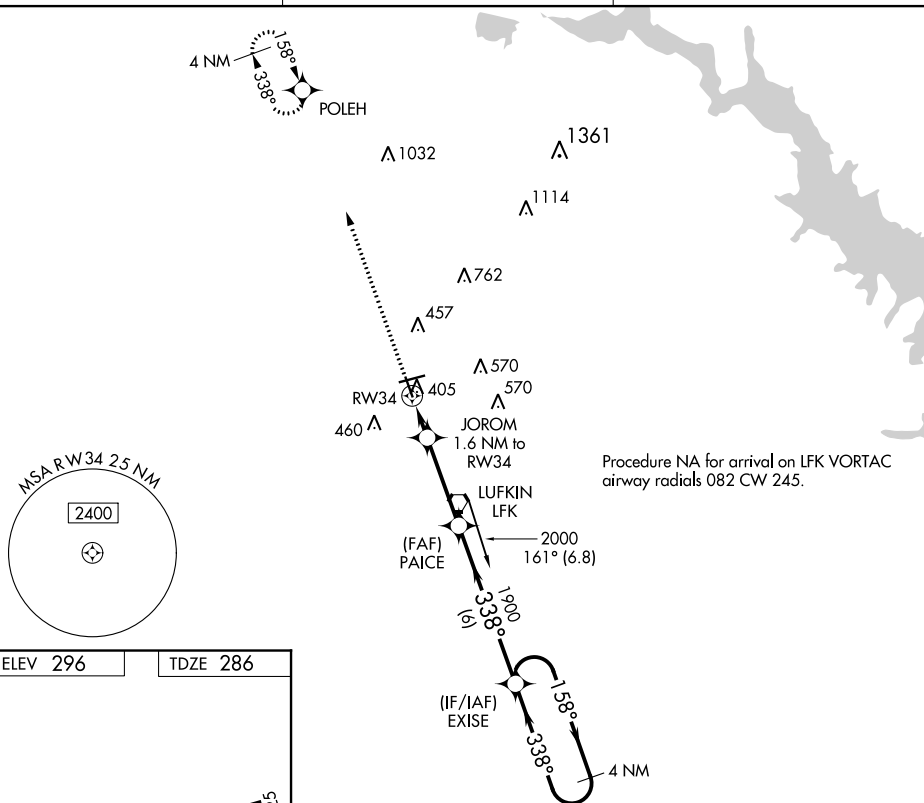


DME/DME RNP-0.3 NA. Circling Rwy 16, 25 NA at night.  
Rwy 34 helicopter visibility reduction below  $\frac{3}{4}$  SM NA.

**MISSED APPROACH:** Climb to 2100 direct POLEH and hold.

ASOS  
120,625

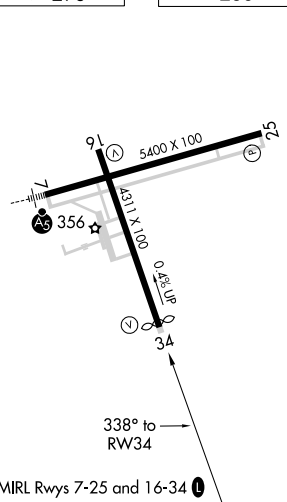
HOUSTON CENTER  
125.175 285.575

UNICOM  
123.0 (CTAF) **L**

Procedure NA for arrival on LFK VORTAC  
airway radials 082 CW 245.

ELEV 296

TDZE 286



LUFKIN, TEXAS

Amdt 2 07DEC17

31°14'N-94°45'W

ANGELINA COUNTY (LFK)

RNAV (GPS) RWY 34

SC-5, 31 DEC 2020 to 28 JAN 2021