

PALESTINE, TEXAS

AL-871 (FAA)

20142

VOR/DME FZT	APP CRS	Rwy Idg	5005
111.4	202°	TDZE	416
Chan 51		Apt Elev	423

VOR RWY 18
PALESTINE MUNI (PSN)

DME required.

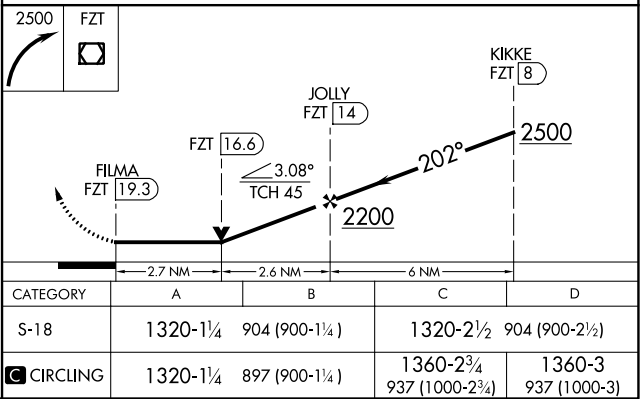
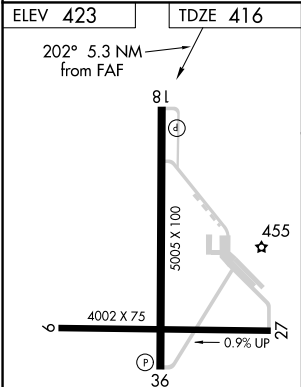
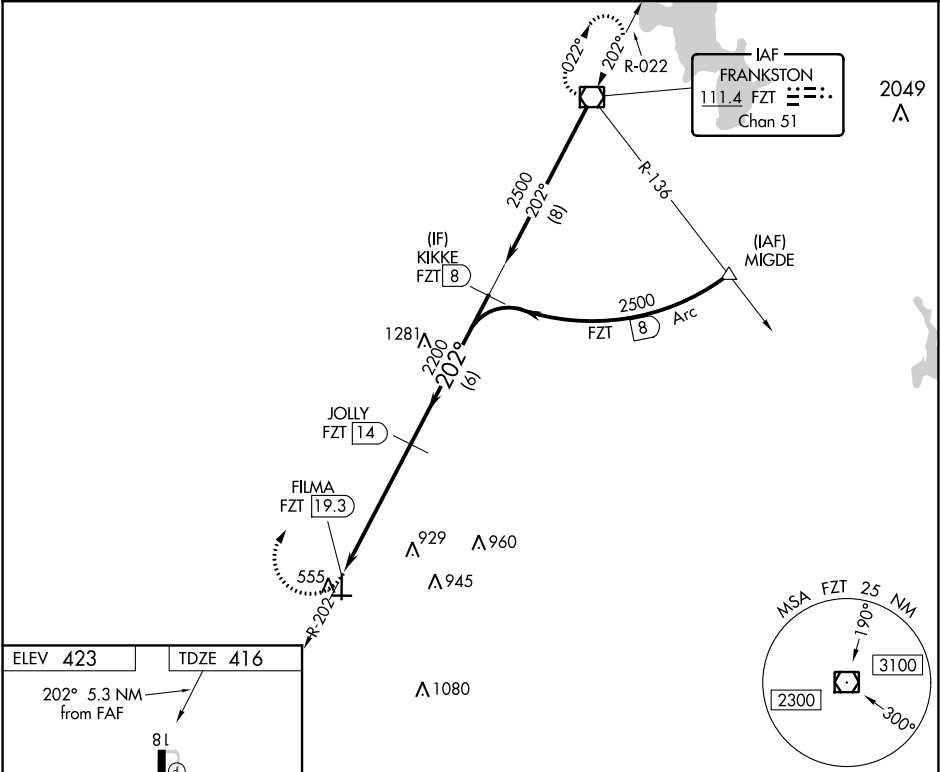
NA Rwy 18 helicopter visibility reduction below ¾ SM NA.

MISSING APPROACH: Climbing right turn to 2500 direct FZT VOR/DME and hold.

AWOS-3
118.025

FORT WORTH CENTER
135.25 265.1

UNICOM
122.7 (CTAF) 0



REIL Rwy 36
MIRL Rwy 18-36 and 9-27 0

PALESTINE, TEXAS
Amdt 6 15AUG19

31°47'N - 95°42'W

PALESTINE MUNI (PSN)
VOR RWY 18

SC-5, 31 DEC 2020 to 28 JAN 2021

SC-5, 31 DEC 2020 to 28 JAN 2021