

WAAS
CH **87022**
W29A

APP CRS
286°

Rwy Idg
TDZE **314**
Apt Elev **321**

RNAV (GPS) RWY 29

EASTERWOOD FIELD (CLL)

RNP APCH.

▼

▲

Baro-VNAV NA when using Caldwell altimeter setting.
For uncompensated Baro-VNAV systems, LNAV/VNAV NA below -3°C or above 54°C. Rwy 29 helicopter visibility reduction below ¾ SM NA.

MISSED APPROACH: Climb to 2000 direct ICESO and hold.

ATIS
126.85

HOUSTON APP CON
134.3 360.85

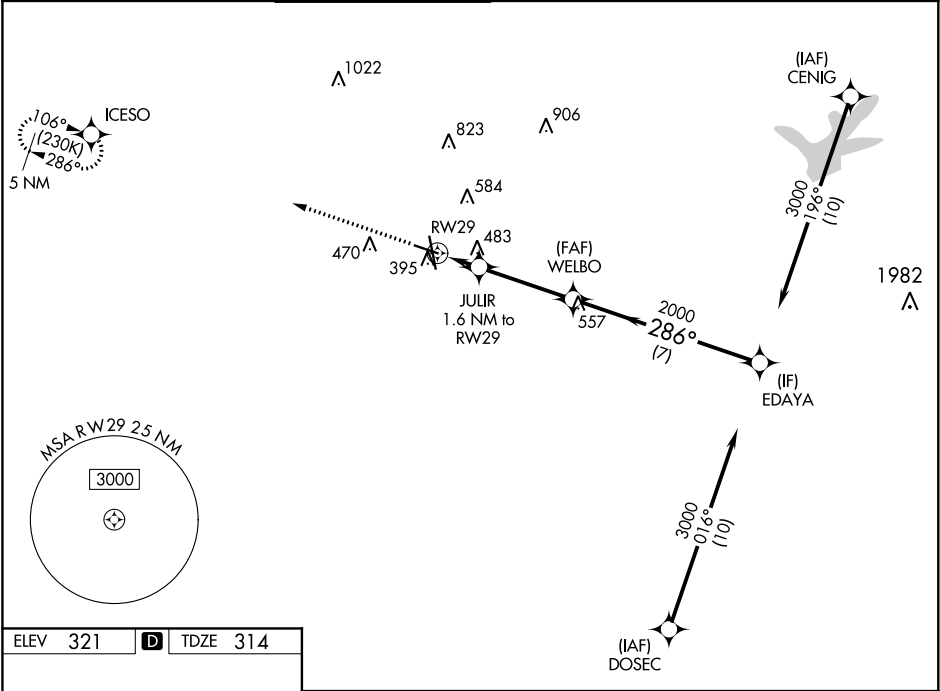
EASTERWOOD TOWER ★
118.5 (CTAF) 284.7

GND CON
128.7 284.7

CLNC DEL
128.7

CLNC DEL
120.4
(when twr closed)

UNICOM
122.95



ELEV 321

D

TDZE 314

Diagram showing the runway (RWY 29) and taxiway (TWX 388) layout. Key features include:

- Runway** (RWY 29) and **Taxiway** (TWX 388).
- Obstacles** near the runway: 5138 x 150, 7000 x 146, 35.
- Angle** 286° to RWY 29.

REIL Rwy 29

MIRL Rwy 11-29

HIRL Rwy 17-35

2000

ICSO

*LNAV only.

JULIR 1.6 NM to RWY 29

WELBO 2000

EDAYA 3000

GP 3.00° TCH 54

RWY 29

860*

2000

286°

1.6 NM

3.5 NM

7 NM

CATEGORY	A	B	C	D	E
LPV DA	564-¾ 250 (300-¾)				
LNAV/VNAV DA	762-1⅜ 448 (500-1⅜)				
LNAV MDA	740-1	426 (500-1)	740-1¼	426 (500-1¼)	
C CIRCLING	860-1 539 (600-1)	880-1 559 (600-1)	1000-2 679 (700-2)	1180-2¾ 859 (900-2¾)	1180-3 859 (900-3)