

WAAS CH 45603 W35A	APP CRS 348°	Rwy ldg 6700 TDZE 152 Apt Elev 152
--	------------------------	---

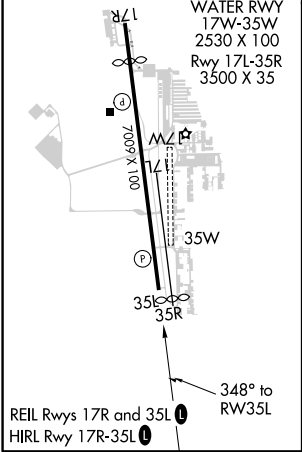
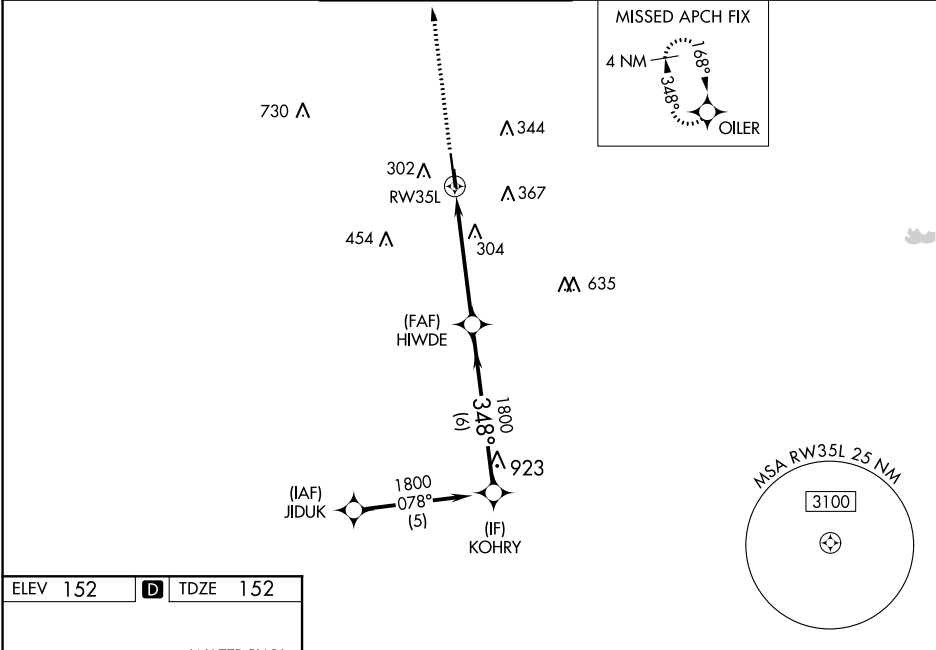
RNAV (GPS) RWY 35L
DAVID WAYNE HOOKS MEMORIAL (DWH)



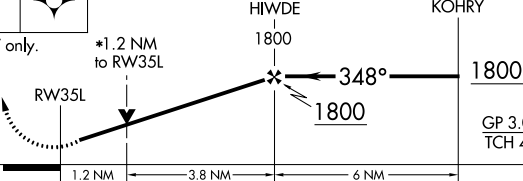

RNP APCH.

⚠ Baro-VNAV and VDP NA when using George Bush Intercontinental/Houston altimeter setting. For uncompensated Baro-VNAV systems, LNAV/VNAV NA below -4°C (25°F) or above 54°C (130°F). When local altimeter setting not received, use George Bush Intercontinental/Houston altimeter setting and increase all DA 36 feet and all MDA 40 feet, increase LPV and LNAV/VNAV visibility all Cats ½ mile, LNAV visibility Cats C/D ¼ mile. Rwy 35L helicopter visibility reduction below ¾ SM NA. Circling NA to Rwys 17W and 35W.

MISSED APPROACH:
Climb to 2000 direct OILER and hold.

ATIS 128.375	HOUSTON APP CON 119.7 281.4	HOOKESTOWER★ 127.4 354.1 (EAST) 118.4 (CTAF) 0 354.1 (WEST)	GND CON 121.8 239.0	CLNC DEL 119.45	UNICOM 122.95
------------------------	---------------------------------------	---	-------------------------------	---------------------------	-------------------------



2000	OILER	VGSI and RNAV glidepath not coincident (VGSI Angle 3.00/TCH 41).			
					
*LNAV only.					
*1.2 NM to RW35L					
RW35L					
1.2 NM		3.8 NM		6 NM	
A		B		C	
D					
CATEGORY					
LPV DA	451-1		299 (300-1)		
LNAV/ VNAV DA	552-1 $\frac{3}{8}$		400 (400-1 $\frac{3}{8}$)		
LNAV MDA	560-1 408 (500-1)		560-1 $\frac{1}{8}$		408 (500-1 $\frac{1}{8}$)
 CIRCLING	640-1 488 (500-1)	660-1 508 (600-1)	680-1 $\frac{1}{2}$ 528 (600-1 $\frac{1}{2}$)	760-2 608 (700-2)	