

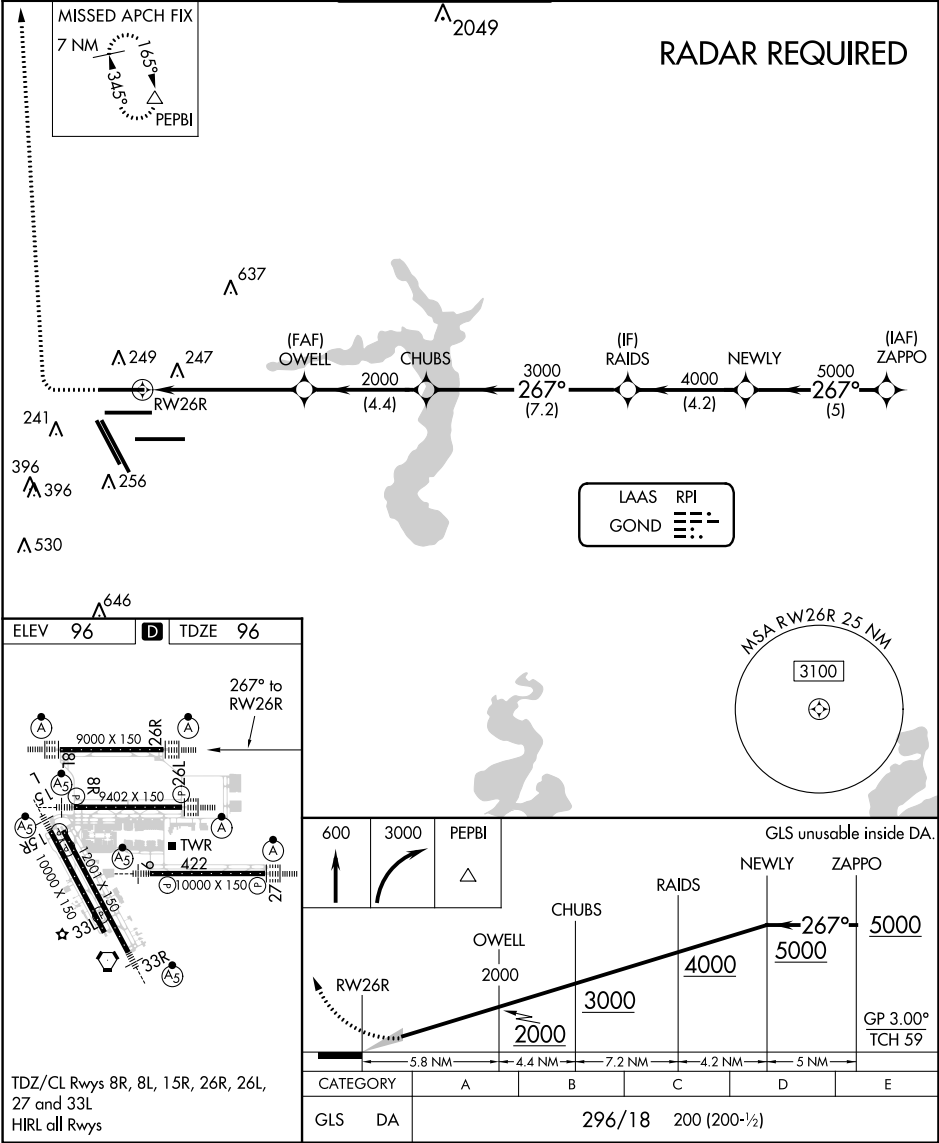
LAAS CH 21484 RPI GOND	APP CRS 267°	Rwy Idg TDZE 96 Apt Elev 96
--	------------------------	---

GLS RWY 26R

GEORGE BUSH INTERCONTINENTAL/HOUSTON (IAH)

NA For inop ALSF, increase GLS all Cats visibility to RVR 4000. DME/DME RNP-0.3 NA. GPS required. Simultaneous approach authorized with Rwy 26L and Rwy 27. Use of FD or AP providing RNAV track guidance required during simultaneous operations. Autoland approach NA.	ALSF-2 	MISSED APPROACH: Climb to 600 then climbing right turn to 3000 direct PEPBI and hold.
--	------------	---

D-ATIS 124.05	HOUSTON APP CON 120.05 379.1 EAST 124.35 316.15 WEST	HOUSTON TOWER 120.72 290.2	GND CON 121.7	CLNC DEL 128.1	CPDLC
-------------------------	--	--------------------------------------	-------------------------	--------------------------	-------



SC-5, 31 DEC 2020 to 28 JAN 2021

SC-5, 31 DEC 2020 to 28 JAN 2021