

LAAS CH 22306 RPI GGHI	APP CRS 267°	Rwy Idg 10000 TDZE 87 Apt Elev 96
--	------------------------	--

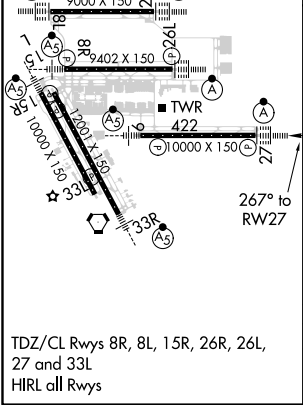
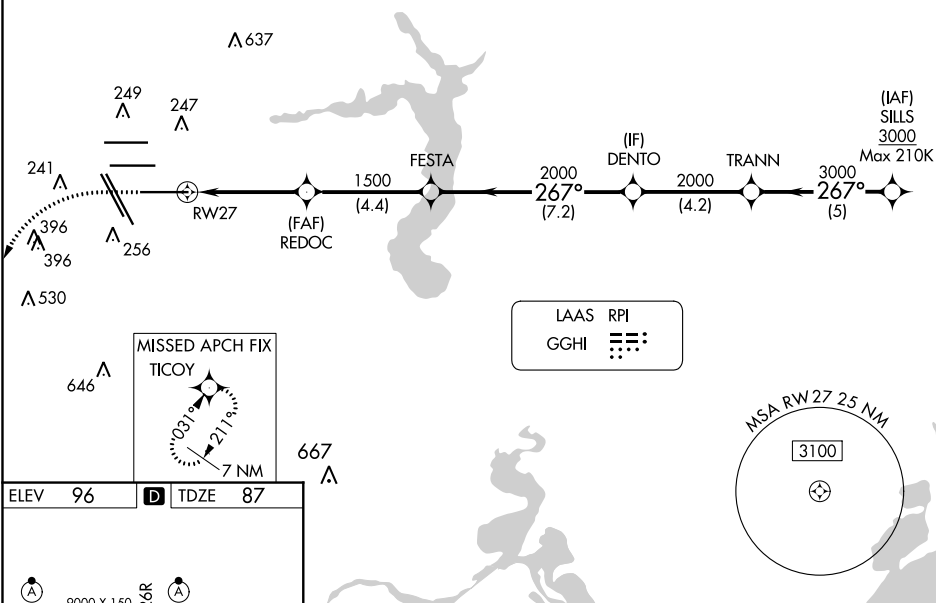
GLS RWY 27

GEORGE BUSH INTERCONTINENTAL/HOUSTON (IAH)

NA For inop ALSF, increase GLS all Cats visibility to RVR 4000. Simultaneous approach authorized with Rwy 26L and Rwy 26R. DME/DME RNP-0.3 NA. GPS required. Use of FD or AP providing RNAV track guidance required during simultaneous operations. Autoland approach NA.	ALSF-2 	MISSED APPROACH: Climb to 560 then climbing left turn to 3100 direct TICOY and hold.
---	------------	--

D-ATIS 124.05	HOUSTON APP CON 120.05 379.1 EAST 124.35 316.15 WEST	HOUSTON TOWER 135.15 290.2	GND CON 118.575	CLNC DEL 128.1	CPDLC
-------------------------	--	--------------------------------------	---------------------------	--------------------------	-------

RADAR REQUIRED



560	3100	TICOY	VGSI and GLS glidepath not coincident (VGSI Angle 3.00/TCH 70).		
GLS unusable inside DA.					
CATEGORY	A	B	C	D	E
GLS	DA	287/18 200 (200-½)			

SC-5, 31 DEC 2020 to 28 JAN 2021

SC-5, 31 DEC 2020 to 28 JAN 2021