

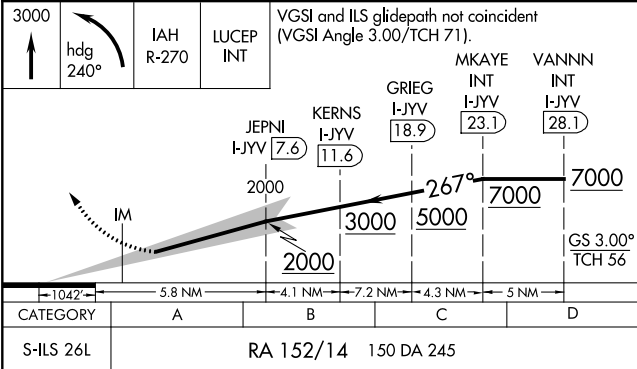
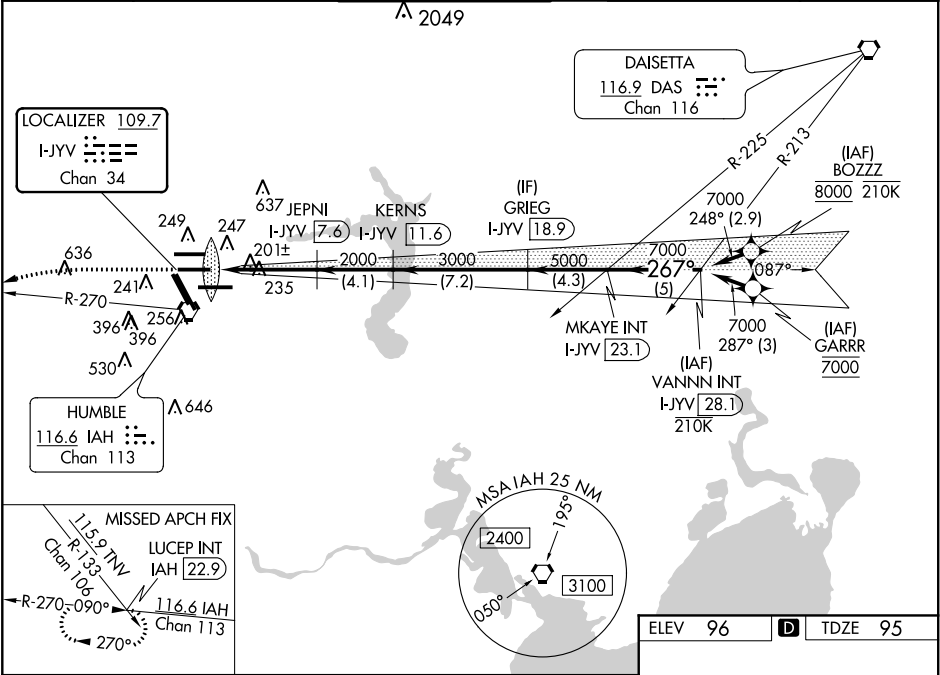
LOC/DME I-JYV	APP CRS	Rwy Idg	9402
109.7	267°	TDZE	95
Chan 34		Apt Elev	96

ILS RWY 26L (SA CAT I)

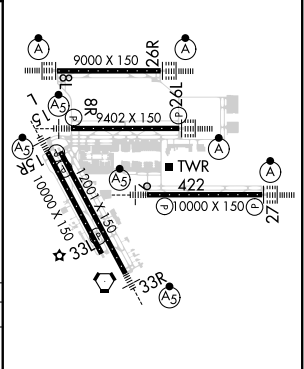
GEORGE BUSH INTERCONTINENTAL/HOUSTON (IAH)

DME required. From BOZZZ, GARRR: RNAV 1-GPS required.	ALSIF-2	MISSED APPROACH: Climb to 3000 then left turn heading 240° and IAH VORTAC R-270 to LUCEP INT/IAH 22.9 DME and hold.
Simultaneous approach authorized with Rwy 26R and Rwy 27. Requires specific OPSPEC, MSPEC, or LOA approval and use of HUD to DH.		

D-ATIS	HOUSTON APP CON	HOUSTON TOWER	GND CON	CLNC DEL	CPDLC
124.05	120.05 379.1 EAST 124.35 316.15 WEST	125.35 290.2	118.575	128.1	



ELEV 96	TDZE 95
---------	---------



**SA CATEGORY I ILS - SPECIAL AIRCREW & AIRCRAFT CERTIFICATION REQUIRED**

TDZ/CL Rwy's 8R, 8L, 15R, 26R, 26L, 27 and 33L  
HIRL all Rwy's

SC-5, 31 DEC 2020 to 28 JAN 2021

SC-5, 31 DEC 2020 to 28 JAN 2021