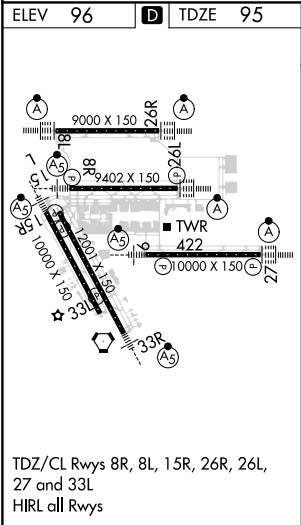
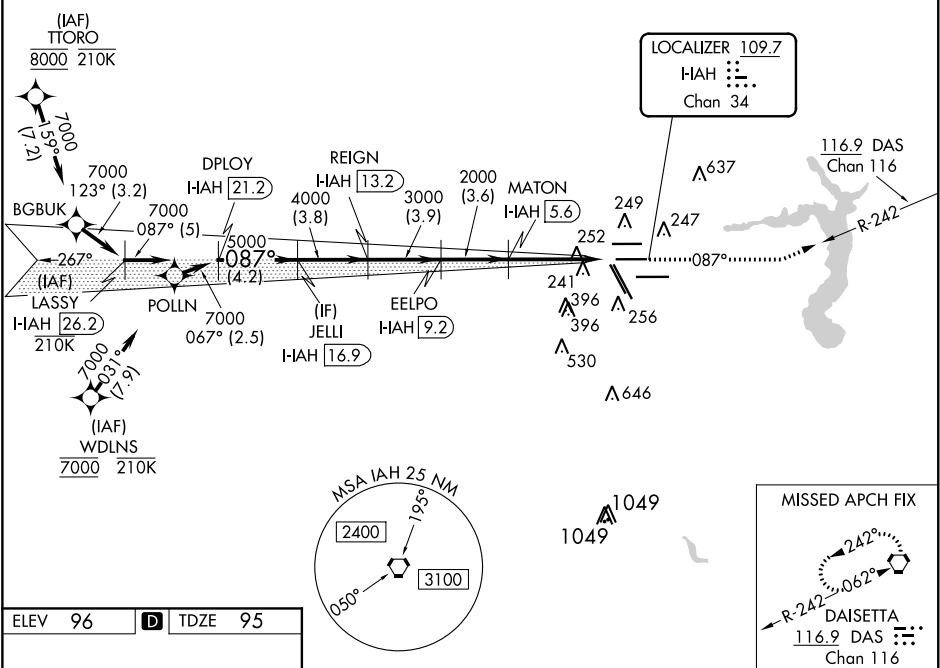


LOC/DME I-IAH	APP CRS	Rwy Idg	9402
109.7	087°	TDZE	95
Chan 34		Apt Elev	96

ILS RWY 8R (SA CAT I & II)

GEORGE BUSH INTERCONTINENTAL/HOUSTON (IAH)

RNAV 1-GPS or RADAR required for procedure entry, DME.			MALSR	MISSED APPROACH: Climb to 3000 on heading 087° and on DAS VORTAC R-242 to DAS VORTAC and hold.	
<div>▼</div>	Simultaneous approach authorized. SA CAT I: Requires specific OPSPEC, MSPEC, or LOA approval and use of HUD to DH. SA CAT II: Reduced lighting: requires specific OPSPEC, MSPEC, or LOA approval and use of autoland or HUD to touchdown.				
D-ATIS 124.05	HOUSTON APP CON 120.05 379.1 EAST 124.35 316.15 WEST	HOUSTON TOWER 125.35 290.2	GND CON 118.575	CLNC DEL 128.1	CPDLC



VGSI and ILS glidepath not coincident (VGSI Angle 3.00/TCH 72).						3000 ↑ hdg 087°	DAS DAS R-242	DAS ◻
LASSY I-IAH 26.2	DPLOY I-IAH 21.2	JELLI IAH 16.9	REIGN I-IAH 13.2	EELPO IAH 9.2	MATON INT I-IAH 5.6			
7000	7000	5000	4000	3000	2000			
GS 3.00° TCH 55	087°	087°						
5 NM		4.2 NM	3.8	3.9	3.6	5.8 NM	1040°	
CATEGORY	A		B		C		D	
S-ILS 8R	SA CAT I RA 152/14		150		DA 245			
S-ILS 8R	SA CAT II RA 102/12		100		DA 195			

SA CATEGORY I and II ILS SPECIAL AIRCREW & AIRCRAFT CERTIFICATION REQUIRED