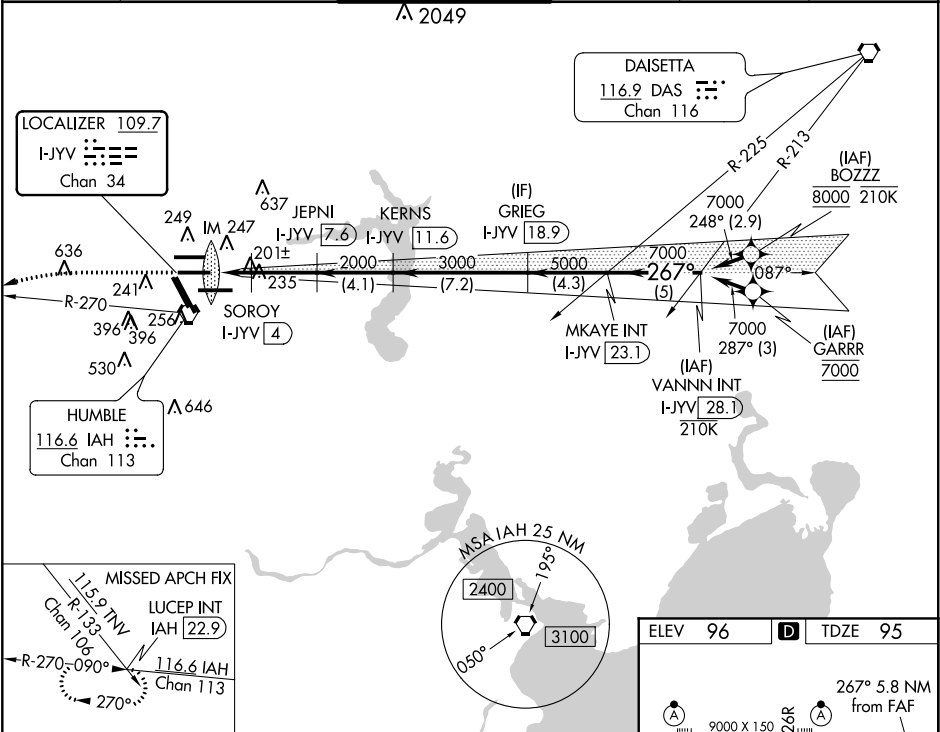


LOC/DME I-JYV	APP CRS	Rwy Idg	9402
109.7	267°	TDZE	95
Chan 34		Apt Elev	96

ILS or LOC RWY 26L
GEORGE BUSH INTERCONTINENTAL/HOUSTON (IAH)

DME required. From BOZZZ, GARRR: RNAV 1-GPS required.	ALSIF-2	MISSED APPROACH: Climb to 3000 then left turn heading 240° and IAH VORTAC R-270 to LUCEP INT/IAH 22.9 DME and hold.
Simultaneous approach authorized with Rwy 26R and Rwy 27. For inop ALS, increase S-ILS 26L Cat E visibility to RVR 4000, S-LOC 26L Cat C/D/E visibility to RVR 5000.		

D-ATIS	HOUSTON APP CON	HOUSTON TOWER	GND CON	CLNC DEL	CPDLC
124.05	120.05 379.1 EAST 124.35 316.15 WEST	125.35 290.2	118.575	128.1	



3000	hdg 240°	IAH R-270	LUCEP INT	VGSI and ILS glidepath not coincident (VGSI Angle 3.00/TCH 71).	MKAYE INT I-JYV 23.1	VANNN INT I-JYV 28.1
*LOC only						
I-JYV 1.7	*I-JYV 2.7	SOROY I-JYV 4	JEPNI I-JYV 7.6	KERN I-JYV 11.6	GRIEG I-JYV 18.9	
IM						
0.1	0.8 NM	1.4 NM	3.5 NM	4.1 NM	7.2 NM	4.3 NM
267°	7000	3000	5000	7000	GS 3.00°	TCH 56
880	2000					
CATEGORY	A	B	C	D	E	
S-ILS 26L	295/18 200 (200-½)					
S-LOC 26L	460/24	365 (400-½)	460/35	365 (400-¾)		

ELEV 96	TDZE 95
267° 5.8 NM from FAF	
9000 X 150	
402 X 150	
2001 X 150	
1000 X 150	
33R	
33L	
TWR 422	
10000 X 150	
27	
TDZ/CL Rwys 8R, 8L, 15R, 26R, 26L, 27 and 33L	
HIRL all Rwys	
FAF to MAP 5.8 NM	
Knots	60 90 120 150 180
Min:Sec	5:48 3:52 2:54 2:19 1:56

SC-5, 31 DEC 2020 to 28 JAN 2021

SC-5, 31 DEC 2020 to 28 JAN 2021