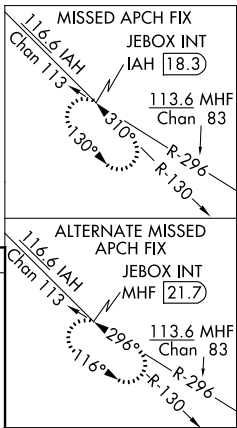
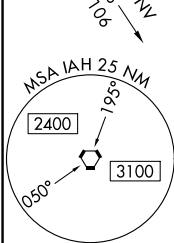
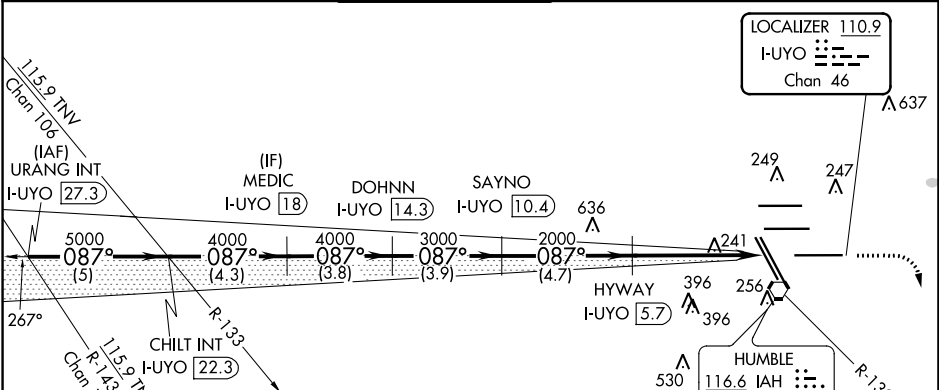


LOC/DME I-UYO 110.9 Chan 46	APP CRS 087°	Rwy Idg 10000 TDZE 90 Apt Elev 96
---	------------------------	--

ILS or LOC RWY 9
GEORGE BUSH INTERCONTINENTAL/HOUSTON (IAH)

DME required. RADAR required for procedure entry.		MALSR 	MISSED APPROACH: Climb to 580 then climbing right turn to 3000 on IAH VORTAC R-130 to JEBX/IAH 18.3 DME and hold.		
Simultaneous approach authorized with Rwy 8L/R. # RVR 1800 authorized with the use of FD or AP or HUD to DA.					
D-ATIS 124.05	HOUSTON APP CON 120.05 379.1 EAST 124.35 316.15 WEST	HOUSTON TOWER 135.15 290.2	GND CON 118.575	CLNC DEL 128.1	CPDLC



ELEV 96	D	TDZE 90			
087° 5.8 NM from FAF					
TDZ/CL Rwys 8R, 8L, 15R, 26R, 26L, 27 and 33L					
HIRL all Rwys					
FAF to MAP 5.8 NM					
Knots	60	90	120	150	180
Min:Sec	5:48	3:52	2:54	2:19	1:56

URANG INT I-UYO 27.3				CHILT INT I-UYO 22.3		MEDIC I-UYO 18		DOHNN I-UYO 14.3		*LOC only. 580 3000 IAH R-130		JEBX INT	
5000 087°				5000		4000		4000		3000 087°		2000	
GS 3.00° TCH 50				VGSI and ILS glidepath not coincident (VGSI Angle 3.00/TCH 71).									
5 NM				4.3 NM		3.8 NM		3.9 NM		4.7 NM		4.5 1.3	
CATEGORY		A		B		C		D		E			
S-ILS 9 #				290/24		200 (200-½)							
S-LOC 9		580/24		490 (500-½)				580/50		490 (500-1)			