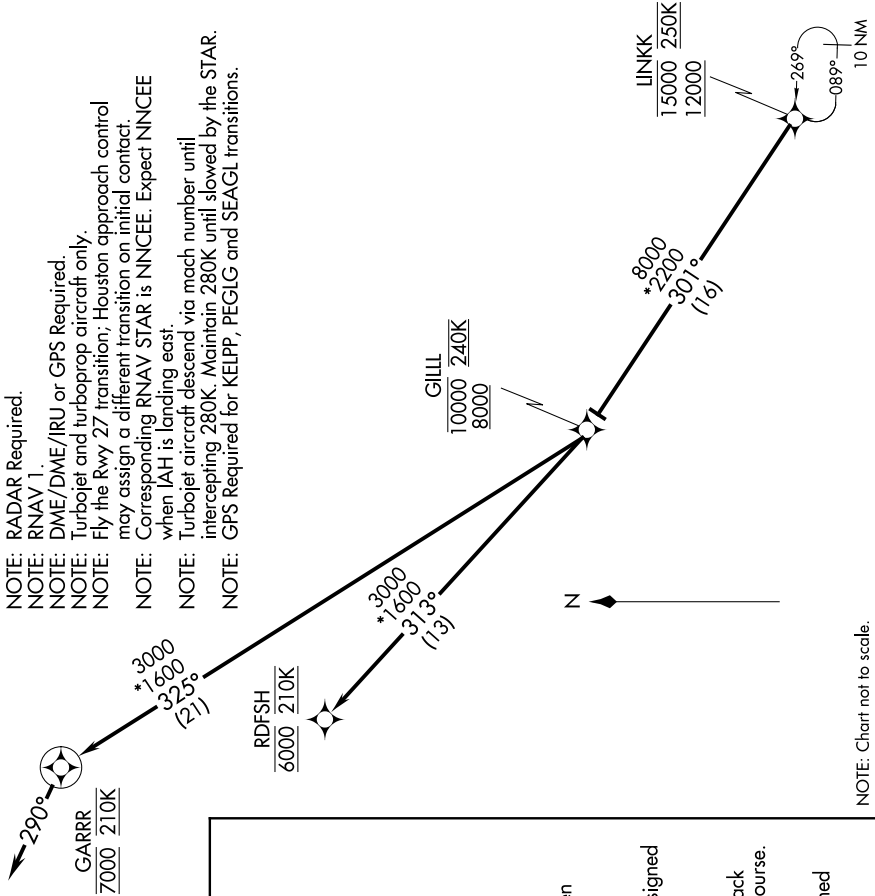


HOUSTON APP CON  
119.625 226.675  
D-ATIS  
124.05



NOTE: RADAR Required.  
NOTE: RNAV 1.  
NOTE: DME/DME/IRU or GPS Required.  
NOTE: Turboprop and turboprop aircraft only.  
NOTE: Fly the Rwy 27 transition; Houston approach control may assign a different transition on initial contact.  
NOTE: Corresponding RNAV STAR is NANCE. Expect NANCE when IAH is landing east.  
NOTE: Turboprop aircraft descend via mach number until intercepting 280K. Maintain 280K until slowed by the STAR.  
NOTE: GPS Required for KELPP, PEGLG and SEAGL transitions.



ARRIVAL ROUTE DESCRIPTION

- GIRLY TRANSITION (GIRLY.LINKK1):
  - HARVEY TRANSITION (HRV.LINKK1):
  - JEPEG TRANSITION (JEPEG.LINKK1):
  - KELPP TRANSITION (KELPP.LINKK1):
  - LEEVILLE TRANSITION (LEV.LINKK1):
  - LAFAYETTE TRANSITION (LFT.LINKK1):
  - MULTI TRANSITION (MULT.LINKK1):
  - PEGLG TRANSITION (PEGLG.LINKK1):
  - SEAGL TRANSITION (SEAGL.LINKK1):
  - SEMMES TRANSITION (SJJ.LINKK1):
- From LINKK on track 301° to cross GILL between 8000 and 10000 and at 240K.
- LANDING RWY 26L: From GILL on track 325° to cross GARRR at 7000 and at 210K. Expect assigned instrument approach RWY 26L.
- LANDING RWY 26R: From GILL on track 325° to cross GARRR at 7000 and at 210K, then on track 290° at 210K. Expect vectors to final approach course.
- LANDING RWY 27: From GILL on track 313° to cross RDFSH at 6000 and at 210K. Expect assigned instrument approach RWY 27.