

APP CRS	Rwy Idg	9000
267°	TDZE	96
	Apt Elev	96

RNAV (RNP) Y RWY 26R

GEORGE BUSH INTERCONTINENTAL/HOUSTON (T A H)

T For uncompensated Baro-VNAV systems, procedure NA below -3°C (27°F) or above 54°C (130°F). GPS required. Simultaneous approach authorized. For inop ALS, increase RNP 0.11 all Cats visibility to RVR 5000 and increase RNP 0.15 all Cats visibility to 1¼ SM. Use of FD or AP providing RNAV track guidance required during simultaneous operations.

ALSF-2



MISSED APPROACH: Climb to 600 then climbing right turn to 3000 direct PEPBI and hold.

D-ATIS 124.05	HOUSTON APP CON 120.05 379.1 EAST 124.35 316.15 WEST	HOUSTON TOWER 120.72 290.2	GND CON 121.7	CLNC DEL 128.1	CPDLC
-------------------------	--	--------------------------------------	-------------------------	--------------------------	-------

RADAR REQUIRED

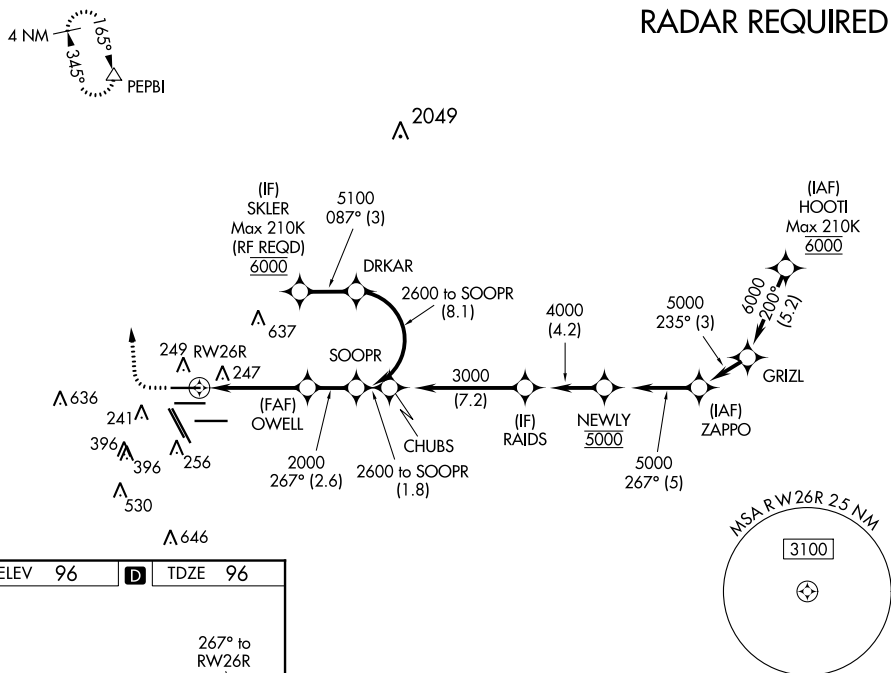


Diagram illustrating the TDZ/CL (Taxiway/Center Line) for Runways 8R, 8L, 15R, 26R, 26L, 27, and 33L. The diagram shows the layout of these runways, including taxiways (TWY 422), and various navigational aids (VORTAC, VORTOM, VORTOM, VORTOM, VORTOM, VORTOM, VORTOM). Dimensions for taxiway widths are given as 9000 X 150. A heading of 267° to RW26R is indicated.

600
3000
PEPBI

See planview for multiple IF locations.

OWELL
2000

SOOPR
2600

RW26R

267°

2000

5.8 NM

2.6 NM

GP 3.00°
TCH 59

CATEGORY	A	B	C	D
RNP 0.11 DA	429/40	333 (400-¾)		
RNP 0.15 DA	496/45	400 (400-¾)		
RNP 0.30 DA	554/50	458 (500-1¼)		

AUTHORIZATION REQUIRED