

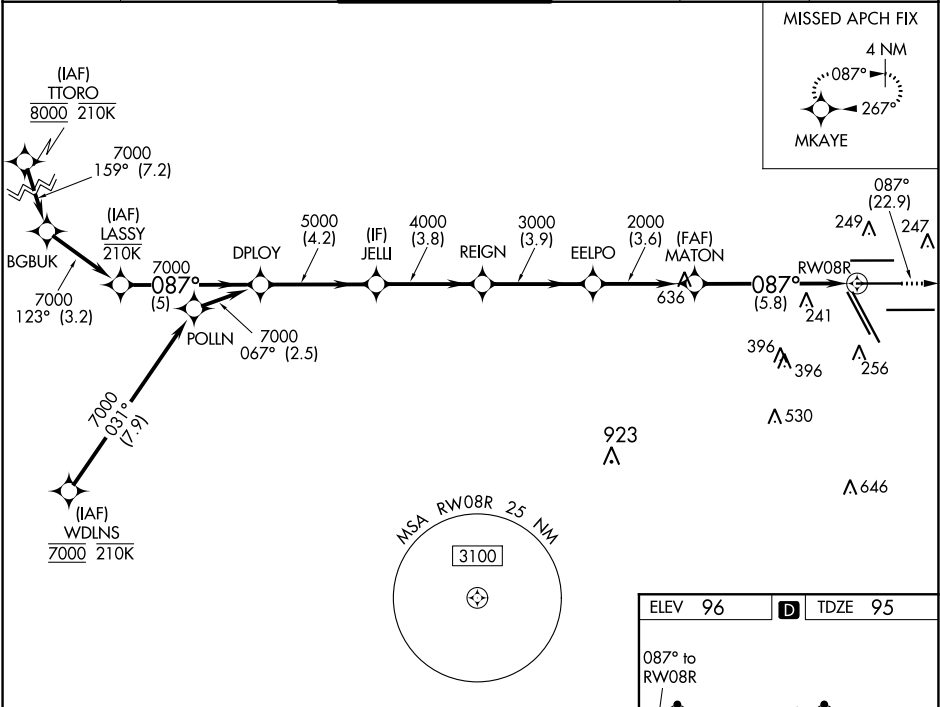
APP CRS	Rwy Idg	9402
087°	TDZE	95
	Apt Elev	96

RNAV (RNP) Y RWY 8R

GEORGE BUSH INTERCONTINENTAL/HOUSTON (IAH)

RNP AR APCH.	MALSR	MISSED APPROACH: Climb to 3000 on track 087° to MKAYE and hold.
For uncompensated Baro-VNAV systems, procedure NA below -3°C or above 54°C. For inop ALS increase RNP 0.13 all Cats visibility to RVR 4500, RNP 0.14 all Cats visibility to RVR 5600, RNP 0.30 all Cats visibility to 1¼ SM. Simultaneous approach authorized.		

D-ATIS	HOUSTON APP CON	HOUSTON TOWER	GND CON	CLNC DEL	CPDLC
124.05	120.05 379.1 EAST 124.35 316.15 WEST	125.35 290.2	118.575	128.1	



VGSI and RNAV glidepath not coincident (VGSI Angle 3.00/TCH 72).					3000	tr 087°	MKAYE	
LASSY	DPLOY	JELLI	REIGN	EELPO	MATON	RW08R		
7000	087° 7000	087° 5000	4000	3000	2000			
GP 3.00° TCH 55								
-5 NM		4.2 NM	3.8	3.9	3.6	5.8 NM		
CATEGORY	A	B	C	D				
RNP 0.13 DA	383/40		288 (300-¾)					
RNP 0.14 DA	441/40		346 (400-¾)					
RNP 0.30 DA	492/45		397 (400-¾)					
AUTHORIZATION REQUIRED								
TDZ/CL Rwys 8R, 8L, 15R, 26R, 26L, 27 and 33L HIRL all Rwys								

SC-5, 31 DEC 2020 to 28 JAN 2021

SC-5, 31 DEC 2020 to 28 JAN 2021