

APP CRS	Rwy Idg	10000
087°	TDZE	91
	Apt Elev	96

RNAV (RNP) Y RWY 9

GEORGE BUSH INTERCONTINENTAL/HOUSTON (IAH)

**▽**

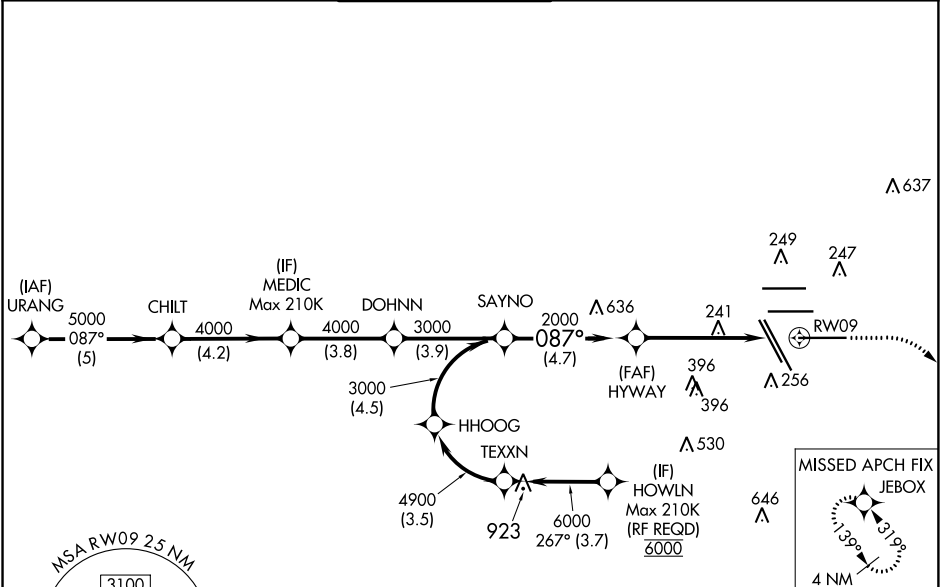
For uncompensated Baro-VNAV systems, procedure NA below -3°C (27°F) or above 54°C (130°F). GPS required. For inop MALSR, increase all Cats visibility to 1½ mile. Simultaneous approach authorized. Use of FD or AP providing RNAV track guidance required during simultaneous operations.

MALSR

(A5)

MISSED APPROACH: Climb to 580 then climbing right turn to 3000 direct JEBOX and hold.

D-ATIS	HOUSTON APP CON	HOUSTON TOWER	GND CON	CLNC DEL	CPDLC
124.05	120.05 379.1 EAST 124.35 316.15 WEST	135.15 290.2	118.575	128.1	



ELEV 96

TDZE 91

VGSI and RNAV glidepath not coincident (VGSI Angle 3.00/TCH 71).

SAYNO 3000 087° 2000 HYWAY 2000

GP 3.00° TCH 50

4.7 NM 5.8 NM

RWY 9

CATEGORY	A	B	C	D
RNP 0.30 DA	516/49 425 (500-1)			

**AUTHORIZATION REQUIRED**

TDZ/CL Rwy's 8R, 8L, 15R, 26R, 26L, 27 and 33L

HIRL all Rwy's

SC-5, 31 DEC 2020 to 28 JAN 2021

SC-5, 31 DEC 2020 to 28 JAN 2021