

WAAS CH <b>49226</b> <b>W26D</b>	APP CRS <b>267°</b>	Rwy Idg <b>9402</b> TDZE <b>95</b> Apt Elev <b>96</b>
--	------------------------	---

RNAV (GPS) Z RWY 26L

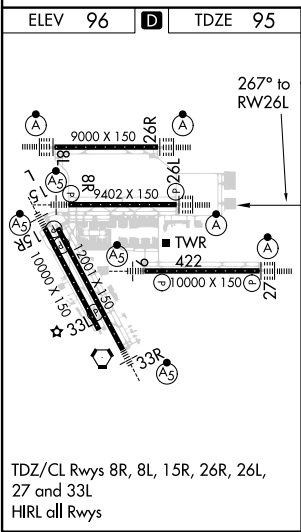
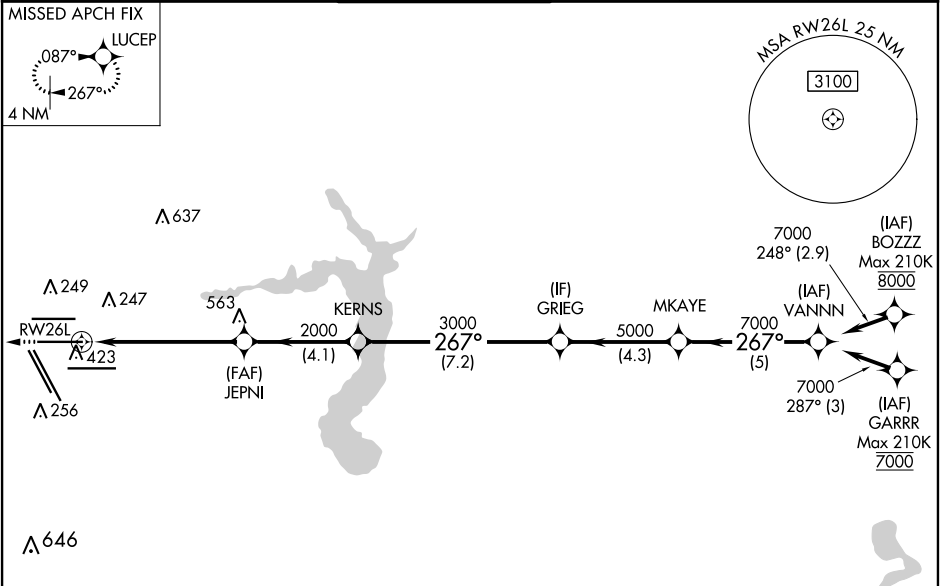
GEORGE BUSH INTERCONTINENTAL/HOUSTON (IAH)

▼ For uncompensated Baro-VNAV systems, LNAV/VNAV NA below -3°C (27°F) or above 54°C (130°F). For inop ALSF, increase LPV Cat E visibility to RVR 4000, LNAV/VNAV Cat E visibility to 1½, and LNAV Cat E visibility to 1¾. DME/DME RNP-0.3 NA. Simultaneous approach authorized with Rwy 26R and Rwy 27. LNAV procedure NA during simultaneous operations. Use of FD or AP providing RNAV track guidance required during simultaneous operations.

ALSF-2

MISSED APPROACH:  
Climb to 3000 direct LUCEP and hold.

D-ATIS <b>124.05</b>	HOUSTON APP CON <b>120.05 379.1</b> EAST <b>124.35 316.15</b> WEST	HOUSTON TOWER <b>125.35 290.2</b>	GND CON <b>118.575</b>	CLNC DEL <b>128.1</b>	CPDLC
-------------------------	--	--------------------------------------	---------------------------	--------------------------	-------



RADAR REQUIRED

	3000	LUCEP			
			VGSI and RNAV glidepath not coincident (VGSI Angle 3.00/TCH 71).		
			*LNAV only		
			*1.6 NM to RW26L		
			GP 3.00° TCH 56		
			1.6 NM 4.2 NM 4.1 NM 7.2 NM 4.3 NM 5 NM		
CATEGORY	A	B	C	D	E
LPV	DA	295/18	200 (200-½)		
LNAV/VNAV	DA	586/60	491 (500-1¼)		
LNAV MDA	680/24	585 (600-½)	680-1¼	585 (600-1¼)	

SC-5, 31 DEC 2020 to 28 JAN 2021

SC-5, 31 DEC 2020 to 28 JAN 2021