

WAAS CH <b>77826</b> <b>W08A</b>	APP CRS <b>087°</b>	Rwy Idg TDZE Apt Elev	<b>9000</b> <b>95</b> <b>96</b>
--	------------------------	-----------------------------	---------------------------------------

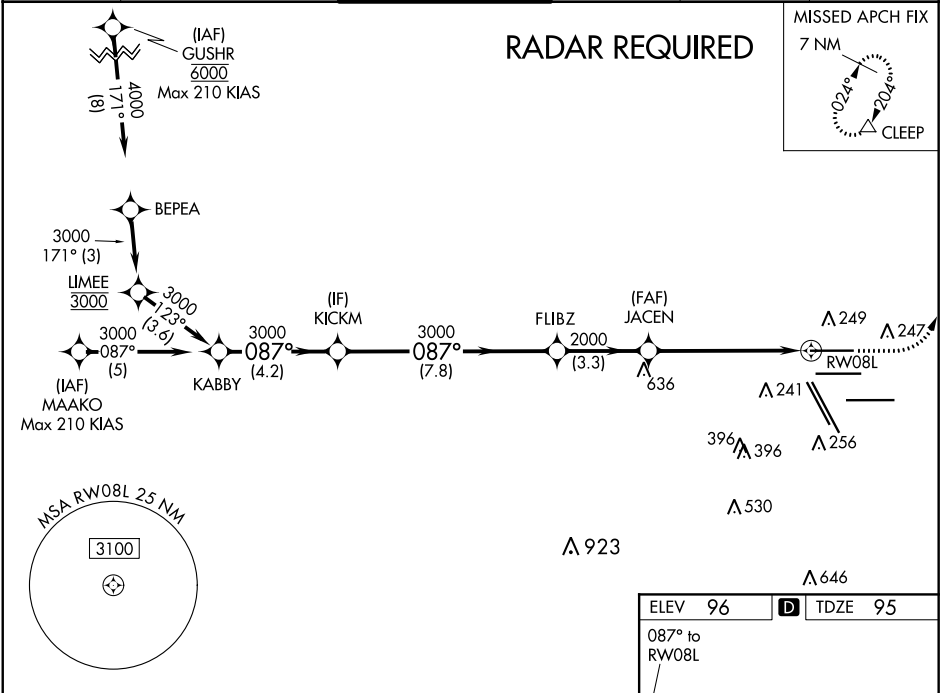
RNAV (GPS) Z RWY 8L  
GEORGE BUSH INTERCONTINENTAL/HOUSTON (IAH)

▼ For uncompensated Baro-VNAV systems, LNAV/VNAV NA below -3°C (27°F) or above 54°C (130°F). For inop ALSF, increase LPV Cat E visibility to RVR 4000, LNAV/VNAV Cat E visibility to 1¼, and LNAV Cat C/D/E visibility to 1¾. Simultaneous approach authorized with Rwy 8R and Rwy 9. DME/DME RNP-0.3 NA. Use of FD or AP providing RNAV track guidance required during simultaneous operations. LNAV procedure NA during simultaneous operations.

ALSF-2

MISSED APPROACH: Climb to 580 then climbing left turn to 4000 direct CLEEP and hold.

D-ATIS <b>124.05</b>	HOUSTON APP CON <b>120.05 379.1 EAST</b> <b>124.35 316.15 WEST</b>	HOUSTON TOWER <b>120.72 290.2</b>	GND CON <b>121.7</b>	CLNC DEL <b>128.1</b>	CPDLC
-------------------------	--	--------------------------------------	-------------------------	--------------------------	-------



KABBY		KICKM		FLIBZ		JACEN		RW08L	
3000-087°		3000		3000		2000		2000	
4.2 NM		7.8 NM		3.3 NM		4.5 NM		1.3 NM	
CATEGORY	A	B	C	D	E				
LPV DA	295/18		200 (200-½)						
LNAV/VNAV DA	486/40		391 (400-¾)						
LNAV MDA	580/24	485 (500-½)	580/50	485 (500-1)					

580 4000 CLEEP

\*LNAV only.

\*1.3 NM to RW08L

ELEV 96 TDZE 95

087° to RW08L

9000 X 150 26R

402 X 150 26L

1000 X 150 33R

200 X 150 33L

TWR 422

10000 X 150 27

TDZ/CL Rwy 8R, 8L, 15R, 26R, 26L, 27 and 33L

HIRL all Rwy