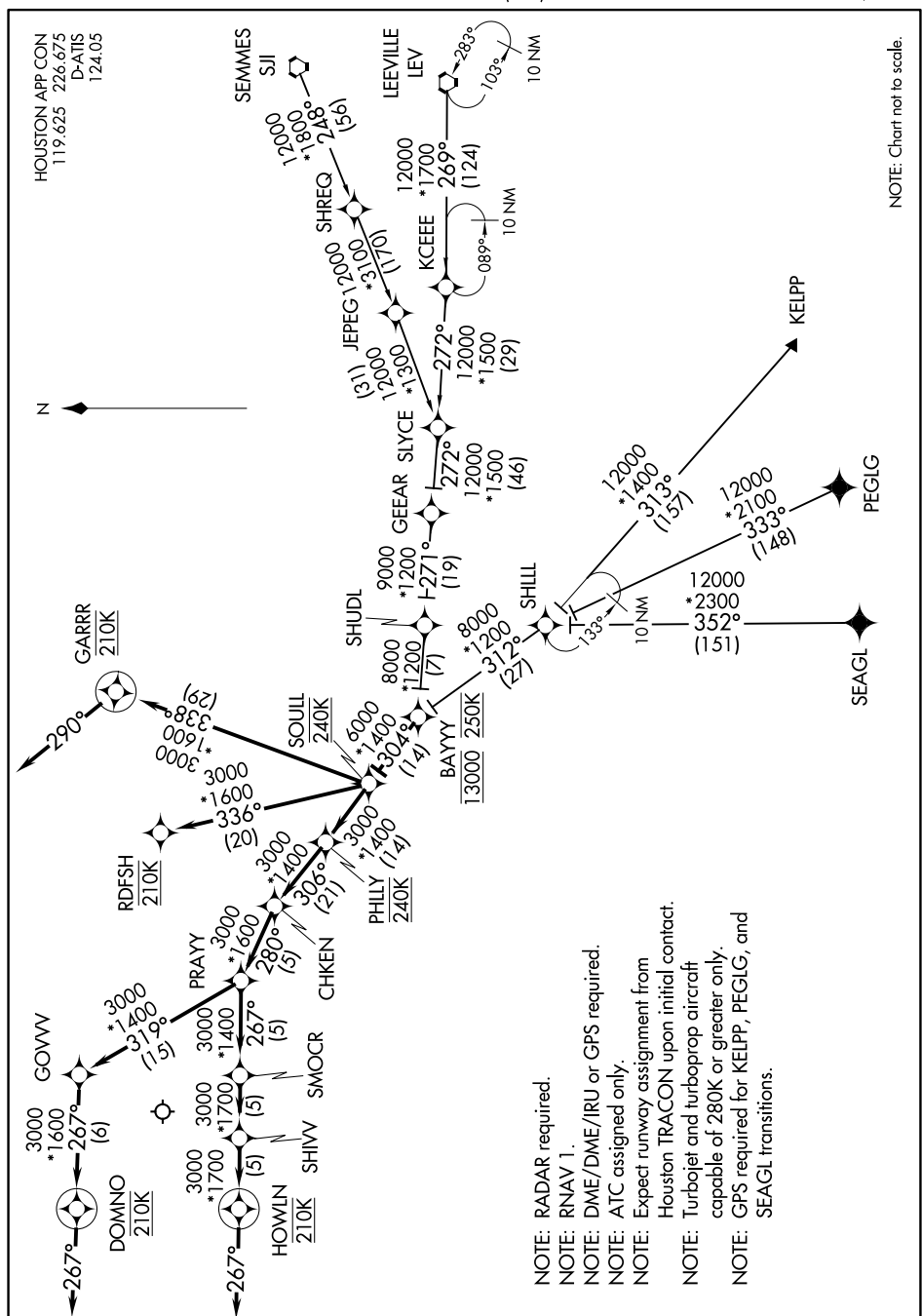


SOULL ONE ARRIVAL (RNAV)

GEORGE BUSH INTERCONTINENTAL/HOUSTON (IAH)

AL-5461 (FAA)

HOUSTON, TEXAS



NOTE: Chart not to scale.

NOTE: RADAR required.

NOTE: RNAV 1.

NOTE: DME/DME/IRU or GPS required.

NOTE: ATC assigned only.

NOTE: Expect runway assignment from

Houston TRACON upon initial contact.

NOTE: Turbojet and turboprop aircraft

capable of 280K or greater only.

NOTE: GPS required for KELPP, PEGLG, and

SEAGL transitions.

SOULL ONE ARRIVAL (RNAV)

(BAYYYY.SOULL1) 08JAN15

HOUSTON, TEXAS

GEORGE BUSH INTERCONTINENTAL/HOUSTON (IAH)

SC-5, 31 DEC 2020 to 28 JAN 2021