

SC-5, 31 DEC 2020 to 28 JAN 2021

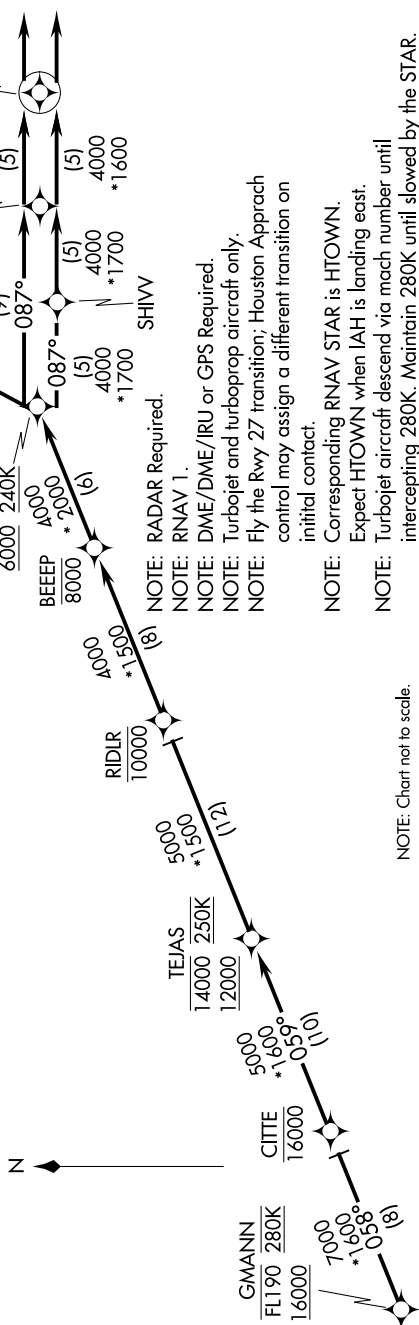
ARRIVAL ROUTE DESCRIPTION

From GMANIN on track 058° to cross CITTE at or below 16000, then on track 059° to cross TEJAS at or above 12000, at or below 14000 and at 250K.

LANDING RUNWAY 26L: From TEJAS on track 059° to cross RIDLR at or below 10000, then on track 059° to cross BEEEP at or below 8000, then on track 059° to cross HOWL and at 210K, then on track 087° to cross SMOCR, then on track 087° to cross PRAYY and at 210K, then on track 087°. Expect vectors to final approach course.

LANDING RUNWAY 26R: From TEJAS on track 059° to cross RIDIR at or below 10000, then on track 059° to cross BEEEP at or below 8000, then on track 059° to cross HOWLIN at 6000 and at 240K, then on track 034° to ZOEER, then on track 087° to cross SKLER at 6000 and at 210K, then on track 087°. Expect vectors to final approach course.

LANDING RUNWAY 27: From TEJAS on track 059° to cross RIDLR at or below 10000, then on track 059° to cross BEEEP at or below 8000, then on track 059° to cross HOWIN at 6000 and at 240K, then on track 087° to SHIVV, then on track 087° to SMOCR, then on track 087° to cross PRAYT at 6000 and at 210K, then on track 087°. Expect vectors to find approach course.



NOTE: Chart not to scale.

SC-5, 31 DEC 2020 to 28 JAN 2021

TEJAS FOUR ARRIVAL (RNAV) Arrival Routes

HOUSTON, TEXAS

(GMANN.TEJAS4) 21JUL16

GEORGE BUSH INTERCONTINENTAL/HOUSTON (IAH)