

## HOODO SIX DEPARTURE (RNAV)

ATIS ★  
118.125  
CLINC D  
121.4  
CLINC D  
119.25  
GND CC  
121.4  
SUGARL  
118.65  
HOUSTO  
123.8 2

NOTE: RNAV 1.

NOTE: RADAR required.

NOTE: ATC assigned only.

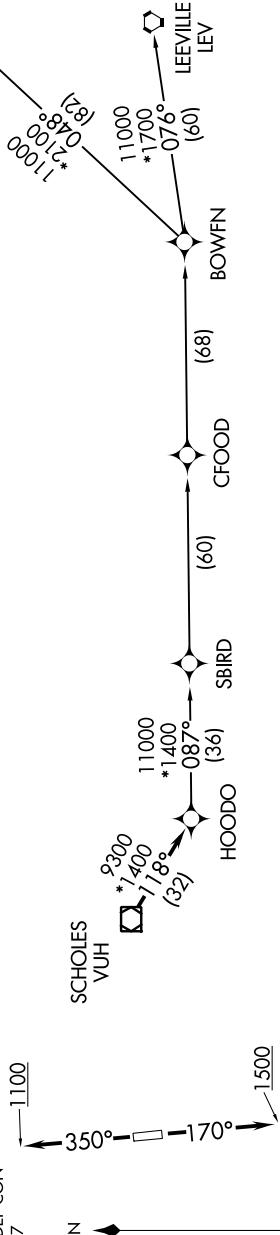
NOTE: DME/DME/IRU or GPS required.

NOTE: For non-GPS equipped aircraft, LCH, LLA, TBD, and LEV DME's must be operational.

## TAKEOFF MINIMUMS

Rwy 17, 35: Standard with a minimum climb of 500' per NM to 600.

**TOP ALTITUDE:  
ASSIGNED BY ATC**



NOTE: Chart not to scale.

## DEPARTURE ROUTE DESCRIPTION

**TAKEOFF RWY 17:** Climb heading 170° to 1500, for RADAR vectors to VUH VOR/DME, thence . . . .

**TAKEOFF RWY 35:** Climb heading 350° to 1100, for RADAR vectors to VUH VOR/DME, thence . . . .

..... on track 118° to HOODO, then on (transition). Maintain ATC assigned altitude.  
Expect filed altitude 10 minutes after departure.

BOWFN TRANSITION (HOODO6.BOWFN)

## CEOOD TRANSITION (HOODOO6 CFEOD)

## HARVEY TRANSITION (H00D06 HPV)

LEEVIIE TRANSITION (HOODOO 1 EV)

LEEVILLE TRANSITION (HOOD06.LEV)