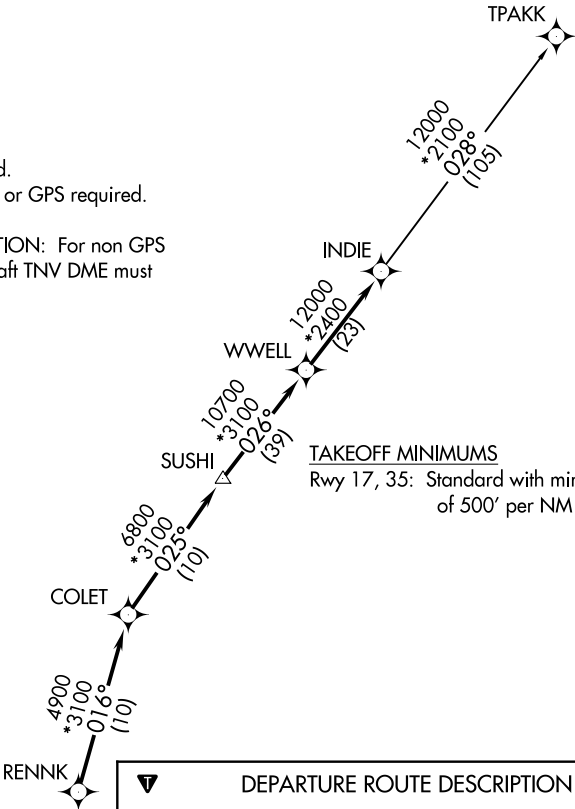


INDIE SEVEN DEPARTURE(RNAV)

ATIS ★  
118.125  
CLNC DEL  
121.4  
CLNC DEL (when twr closed)  
119.25  
GND CON  
121.4  
SUGARLAND TOWER ★  
118.65 (CTAF)  
HOUSTON DEP CON  
123.8 257.7

TOP ALTITUDE:  
ASSIGNED BY ATC

NOTE: RADAR required.  
NOTE: DME/DME/IRU or GPS required.  
NOTE: RNAV 1.  
NOTE: TPAKK TRANSITION: For non GPS  
equipped aircraft TNV DME must  
be operational.



TAKEOFF MINIMUMS  
Rwy 17, 35: Standard with minimum climb  
of 500' per NM to 600.



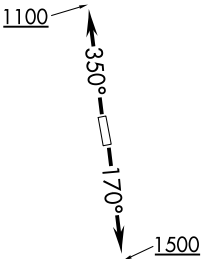
DEPARTURE ROUTE DESCRIPTION

TAKEOFF RWY 17: Climb heading 170° to 1500 for  
RADAR vectors to RENNK, then . . . .

TAKEOFF RWY 35: Climb heading 350° to 1100 for  
RADAR vectors to RENNK, then . . . .

. . . . on track 016° to COLET, then on track 025° to  
SUSHI, then on track 026° to WWELL, then on track  
026° to INDIE, then on (transition). Maintain ATC  
assigned altitude. Expect filed altitude 10 minutes after  
departure.

TPAKK TRANSITION (INDIE7.TPAKK)



NOTE: Chart not to scale.

INDIE SEVEN DEPARTURE(RNAV)