

(INDIE7.INDIE) 19115

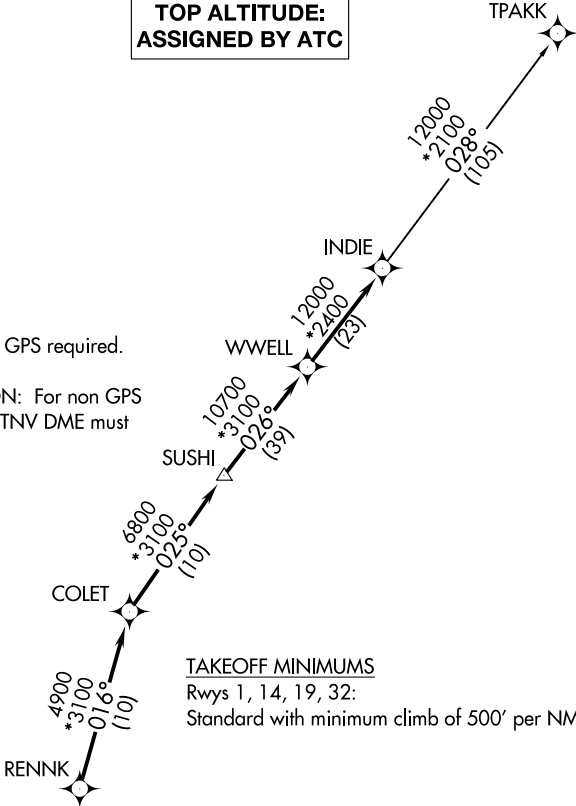
INDIE SEVEN DEPARTURE (RNAV)

ATIS
118.325
CLINC DEL
120.45
119.55 (when tower closed)
GND CON
120.45
CONROE TOWER ★
124.125 (CTAF)
HOUSTON DEP CON
119.7 281.4

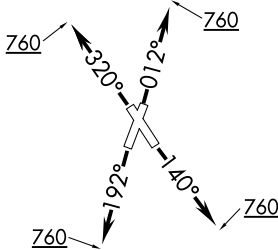
TOP ALTITUDE:
ASSIGNED BY ATC

CONROE-NORTH HOUSTON RGNL (C'XO)
HOUSTON, TEXAS

NOTE: RADAR required.
NOTE: DME/DME/IRU or GPS required.
NOTE: RNAV 1.
NOTE: TPAKK TRANSITION: For non GPS
equipped aircraft TNV DME must
be operational.



TAKEOFF MINIMUMS
Rwys 1, 14, 19, 32:
Standard with minimum climb of 500' per NM to 760.



DEPARTURE ROUTE DESCRIPTION

TAKEOFF RWY 1: Climb heading 012° to 760 for RADAR vectors to RENNK, thence

TAKEOFF RWY 14: Climb heading 140° to 760 for RADAR vectors to RENNK, thence

TAKEOFF RWY 19: Climb heading 192° to 760 for RADAR vectors to RENNK, thence

TAKEOFF RWY 32: Climb heading 320° to 760 for RADAR vectors to RENNK, thence

. . . . on track 016° to COLET, then on track 025° to SUSHI, then on track 026° to WWELL, then on track 026° to INDIE, then on (transition). Maintain ATC assigned altitude. Expect filed altitude 10 minutes after departure.

TPAKK TRANSITION (INDIE7.TPAKK)

NOTE: Chart not to scale.

INDIE SEVEN DEPARTURE (RNAV)
(INDIE7.INDIE) 25APR19

HOUSTON, TEXAS
CONROE-NORTH HOUSTON RGNL (C'XO)

SC-5, 31 DEC 2020 to 28 JAN 2021

SC-5, 31 DEC 2020 to 28 JAN 2021