

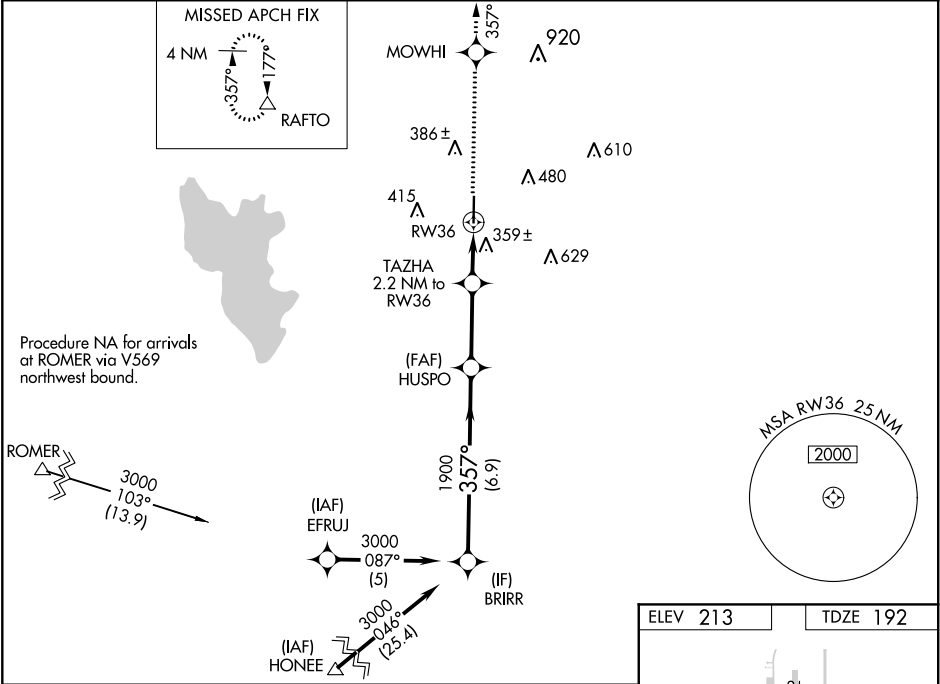
WAAS CH 42813 W36A	APP CRS 357°	Rwy Idg TDZE 192 Apt Elev 213	5500
--	------------------------	---	-------------

RNAV (GPS) RWY 36
JASPER COUNTY-BELL FIELD (JAS)

⚠ Baro-VNAV NA when using De Ridder altimeter setting. For uncompensated Baro-VNAV systems, LNAV/VNAV NA below -15°C (5°F) or above 54°C (130°F). DME/DME RNP-0.3 NA. Helicopter visibility reduction below ¾ SM NA. VDP NA when using De Ridder altimeter setting. When local altimeter setting not received, use De Ridder altimeter setting and increase all DA 85 feet, all MDA 100 feet; increase LPV visibility all Cats and LNAV Cat C ¾ mile, LNAV/VNAV visibility all Cats and Circling Cat C ¼ mile.

MISSED APPROACH:
Climb to 4000 direct MOWHI and via track 357° to RAFTO and hold.

AWOS-3 118.375	HOUSTON CENTER 126.95 363.05	UNICOM 122.8 (CTAF) 0
--------------------------	--	---------------------------------



Procedure Turn NA	BRIRR	VGSI and RNAV glidepath not coincident (VGSI Angle 3.15/TCH 49).	4000	MOWHI	tr 357°	RAFTO
3000	357°	HUSPO	TAZHA 2.2 NM to RW36	*1.5 NM to RW36	*LNAV only	
GP 3.00° TCH 41	1900	*900	6.9 NM	3 NM	0.7 NM	1.5 NM
CATEGORY	A	B	C	D		
LPV DA	594-1 3/8	402 (400-1 3/8)			NA	
LNAV/VNAV DA	675-1 3/4	483 (500-1 3/4)			NA	
LNAV MDA	680-1	488 (500-1)	680-1 3/8 488 (500-1 3/8)		NA	
CIRCLING	740-1	527 (600-1)	740-1 1/2 527 (600-1 1/2)		NA	

