

NDB UTS 308	APP CRS 187°	Rwy Idg 5005 TDZE 338 Apt Elev 363
-----------------------	------------------------	---

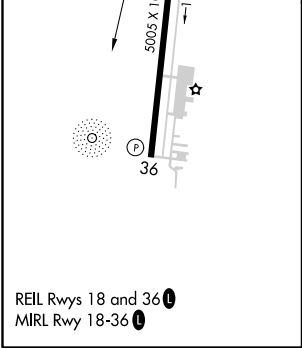
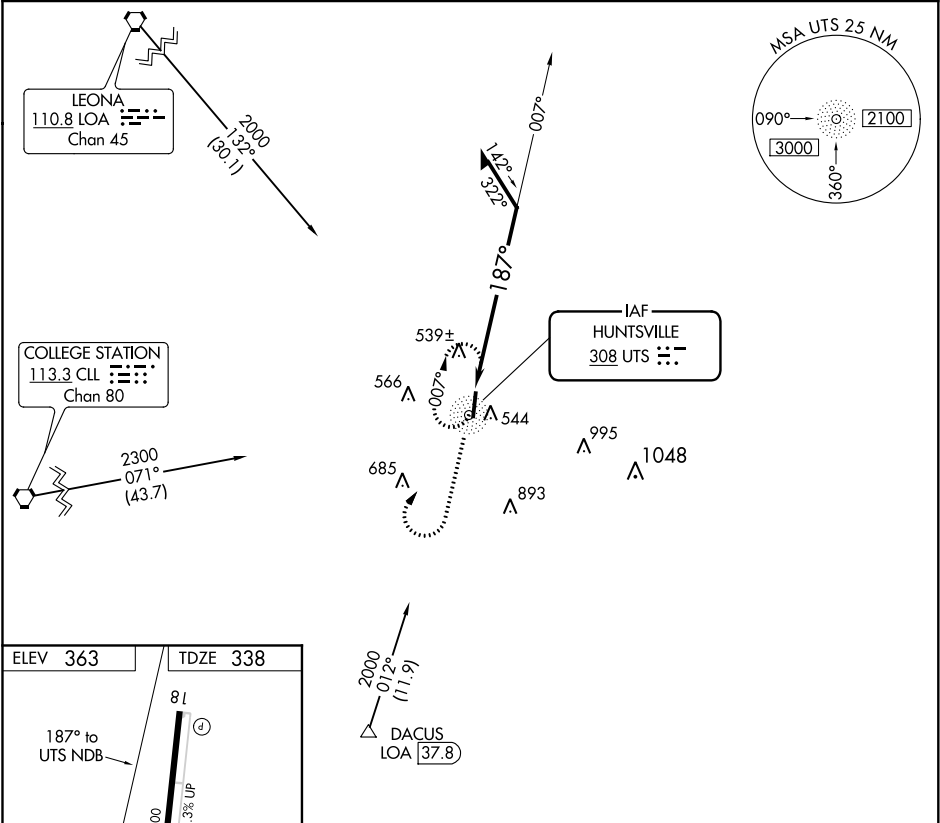
NDB RWY 18
HUNTSVILLE MUNI (UTS)

▼ Visibility reduction by helicopters NA. When local altimeter setting not received use Lone Star Executive altimeter setting and increase all MDA 80 feet, increase S-18 and Circling Cat C visibility ¼ mile.

▲ NA

MISSED APPROACH: Climb to 1500 then climbing right turn to 3000 direct UTS NDB and hold, continue climb-in-hold to 3000.

ASOS 119.425	HOUSTON CENTER 134.8 269.6	UNICOM 122.8 (CTAF) 0
------------------------	--------------------------------------	---------------------------------



1500	3000	UTS	UTS NDB	Remain within 10 NM
↑	↻	○	007°	2000
187°				
CATEGORY	A	B	C	D
S-18	960-1	622 (700-1)	960-1¾ 622 (700-1¾)	NA
CIRCLING	960-1	597 (600-1)	960-1¾ 597 (600-1¾)	NA

SC-5, 31 DEC 2020 to 28 JAN 2021

SC-5, 31 DEC 2020 to 28 JAN 2021