

WAAS
CH **72811**
W18A

APP CRS
180°

Rwy Idg **5005**
TDZE **338**
Apt Elev **363**

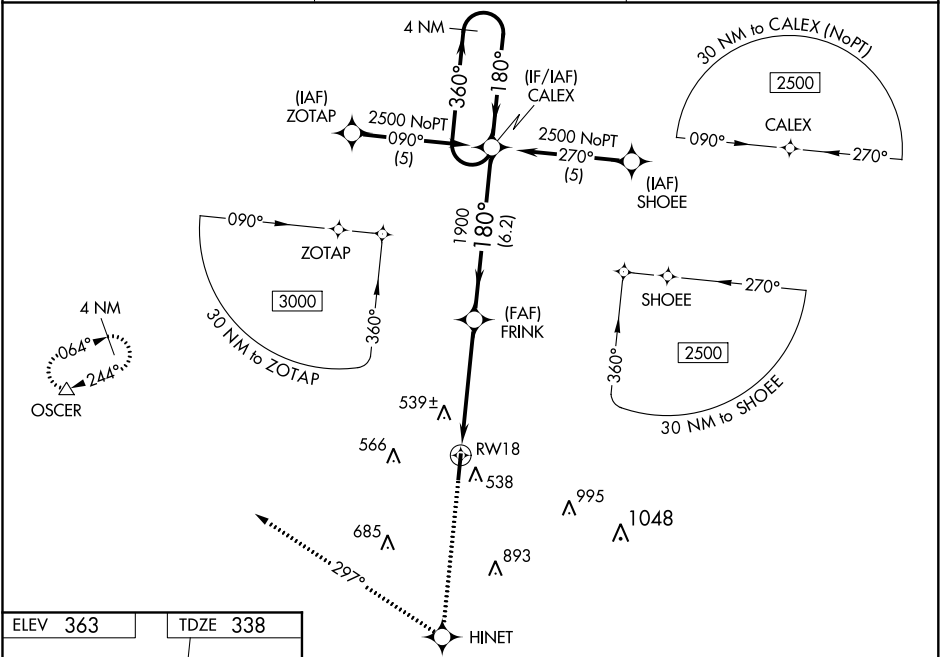
RNAV (GPS) RWY 18

HUNTSVILLE MUNI (UTS)

▼ Baro-VNAV NA when using Lone Star Executive altimeter setting. For uncompensated Baro-VNAV systems, LNAV/VNAV NA below -15°C (5°F) or above 54°C (130°F). DME/DME RNP-0.3 NA. Visibility reduction by helicopters NA. VDP NA when using Lone Star Executive altimeter setting. When local altimeter setting not received, use Lone Star Executive altimeter setting and increase all DA 75 feet and all MDA 80 feet; increase LPV and LNAV/VNAV all Cats and Circling Cat C visibility ¼ mile.

MISSED APPROACH: Climb to 4000 direct HINET and right turn via track 297° to OSCER and hold.

ASOS 119.425	HOUSTON CENTER 134.8 269.6	UNICOM 122.8 (CTAF) ①
------------------------	--------------------------------------	---------------------------------



ELEV **363**

TDZE **338**

180° to RW18

81

5005 x 100

1.3% Up

36

4000 HINET

OSCER

tr 297°

VGSI and RNAV glidepath not coincident (VGSI Angle 3.00/TCH 26).

CALEX

4 NM Holding Pattern

*LNAV only.

FRINK

RW18

1.4 NM

3.4 NM

6.2 NM

2500

360°

180°

1900

GP 3.00° TCH 40

CATEGORY	A	B	C	D
LPV DA		588-1 250 (300-1)		NA
LNAV/VNAV DA		886-2 548 (600-2)		NA
LNAV MDA	840-1	502 (500-1)	840-1½ 502 (500-1½)	NA
CIRCLING	900-1	537 (600-1)	900-1½ 537 (600-1½)	NA