

WAAS CH 78326 W31A	APP CRS 311°	Rwy Idg 5107 TDZE 44 Apt Elev 45
--	------------------------	---

RNAV (GPS) RWY 31

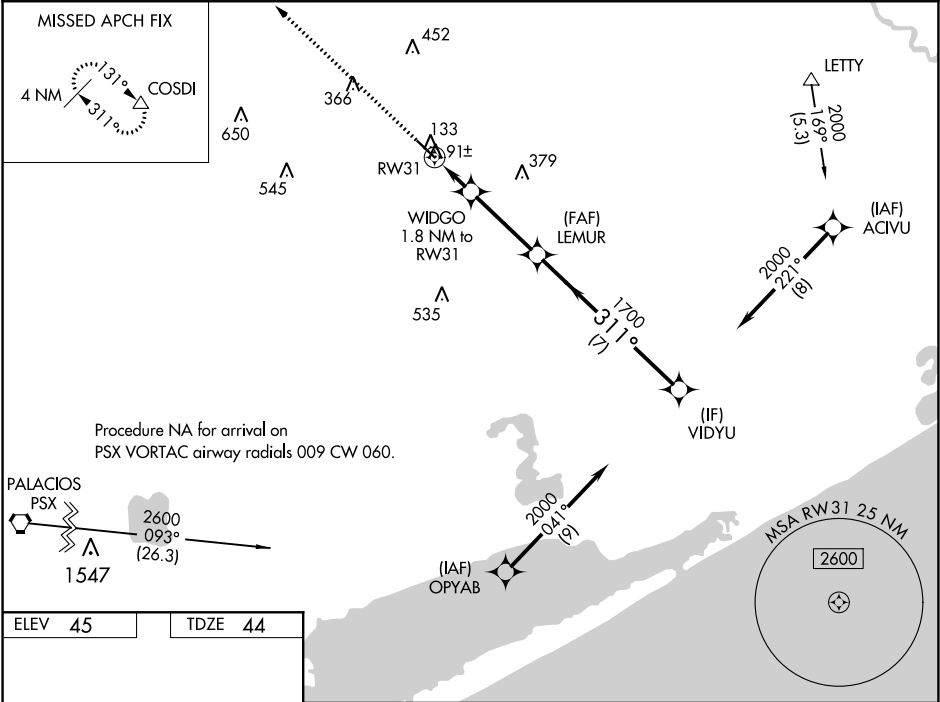
BAY CITY RGNL (BYT)

⚠

For uncompensated Baro-VNAV systems, LNAV/VNAV NA below -15°C (5°F) or above 54°C (130°F). Rwy 13, 31 helicopter visibility reduction below 1 SM NA. DME/DME RNP-0.3 NA. When local altimeter setting not received, use Palacios altimeter setting and increase all DA 63 feet and all MDA 80 feet; increase LNAV visibility Cat C ¼ mile. VDP and Baro-VNAV N/A when using Palacios altimeter setting.

MISSED APPROACH: Climb to 2000 direct COSDI and hold.

AWOS-3 118.075	HOUSTON CENTER 128.6 360.8	UNICOM 122.8 (CTAF)
--------------------------	--------------------------------------	-------------------------------



ELEV **45**

TDZE **44**

REIL Rwy 13 and 31
MIRL Rwy 13-31

2000	COSDI	LEMUR	VIDYU
<div>*LNAV only.</div> <div>WIDGO 1.8 NM to RW31</div> <div>*0.9 NM to RW31</div> <div>640*</div> <div>0.9 0.9 3.3 NM 7 NM</div>			
CATEGORY A B C D			
LPV DA		294-1 250 (300-1) NA	
LNAV/VNAV DA		294-1 250 (300-1) NA	
LNAV MDA		360-1 316 (400-1) NA	
CIRCLING		500-1 455 (500-1) 620-1½ 575 (600-1½) NA	

SC-5, 31 DEC 2020 to 28 JAN 2021

SC-5, 31 DEC 2020 to 28 JAN 2021