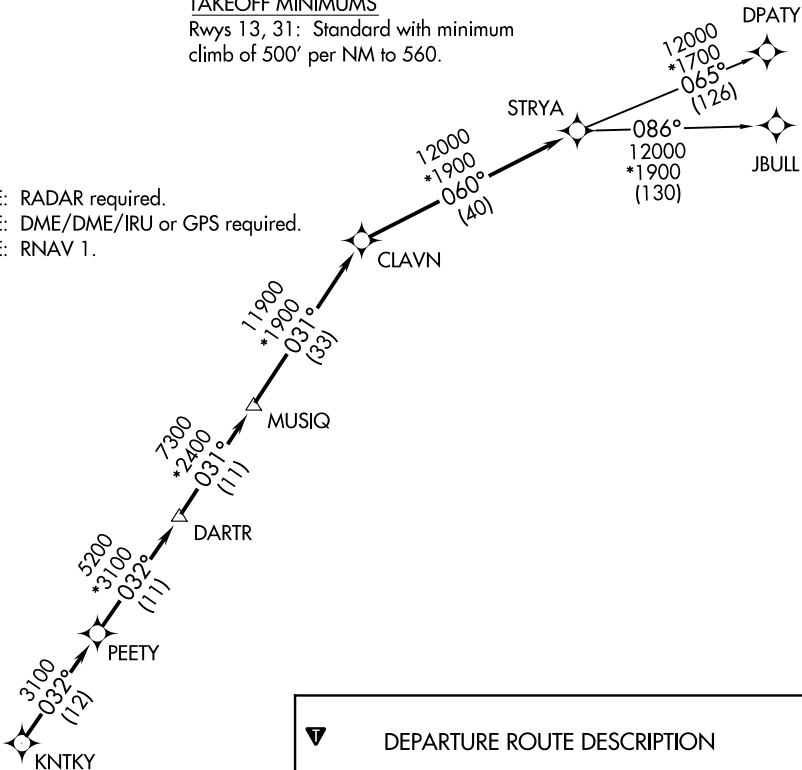


AWOS-3
118.075
CTAF
122.8
HOUSTON DEP CON
128.6 360.85

TOP ALTITUDE: ASSIGNED BY ATC

TAKEOFF MINIMUMS
Rwys 13, 31: Standard with minimum
climb of 500' per NM to 560.

NOTE: RADAR required.
NOTE: DME/DME/IRU or GPS required.
NOTE: RNAV 1.

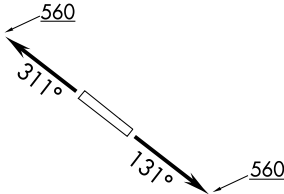


DEPARTURE ROUTE DESCRIPTION

TAKEOFF RWY 13: Climb heading 131° to 560 for
RADAR vectors to KNTKY, thence
TAKEOFF RWY 31: Climb heading 311° to 560 for
RADAR vectors to KNTKY, thence

. . . . on track 032° to PEETY, then on track 032° to
DARTR, then on track 031° to MUSIQ, then on track
031° to CLAVN, then on track 060° to STRYA, then
on (transition). Maintain ATC assigned altitude.
Expect filed altitude 10 minutes after departure.

DPATY TRANSITION (STRYA7.DPATY)
JBULL TRANSITION (STRYA7.JBULL)



NOTE: Chart not to scale.