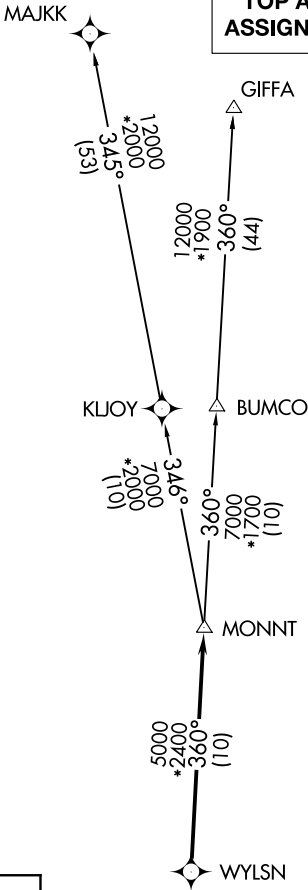


HOUSTON DEP CON
128.6 360.85

TOP ALTITUDE:
ASSIGNED BY ATC

NOTE: RADAR required.
NOTE: DME/DME/IRU or GPS required.
NOTE: RNAV 1.

TAKEOFF MINIMUMS
Rwy 13, 31: Standard with minimum
climb of 500' per NM to 560.



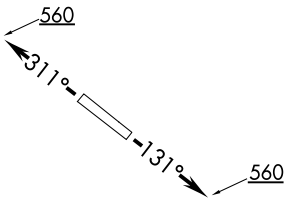
DEPARTURE ROUTE DESCRIPTION

TAKEOFF RWY 13: Climb heading 131° to 560
for RADAR vectors to WYLSN, thence. . .

TAKEOFF RWY 31: Climb heading 311° to 560
for RADAR vectors to WYLSN, thence. . .

. . . on track 360° to MONNT, then on (transition).
Maintain ATC assigned altitude. Expect filed altitude
10 minutes after departure.

GIFFA TRANSITION (WYLSN7.GIFFA)
MAJJK TRANSITION (WYLSN7.MAJKK)



NOTE: Chart not to scale.

SC-5, 31 DEC 2020 to 28 JAN 2021

SC-5, 31 DEC 2020 to 28 JAN 2021