

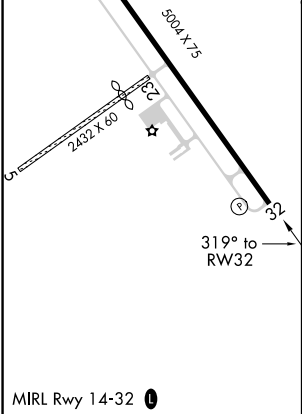
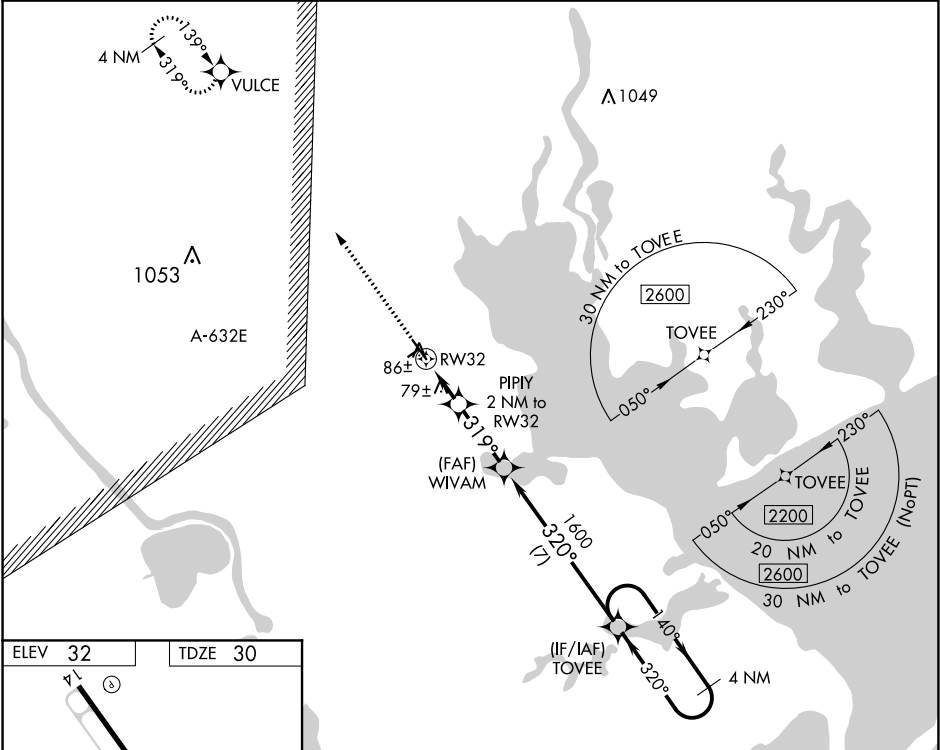
WAAS CH <b>58037</b> <b>W32A</b>	APP CRS <b>319°</b>	Rwy ldg TDZE <b>30</b> Apt Elev <b>32</b>	<b>5004</b>
--	------------------------	---	-------------

RNAV (GPS) RWY 32  
CALHOUN COUNTY (PKV)

**⚠** When local altimeter setting not received, use Victoria altimeter setting and increase all MDA 60 feet and increase LNAV Cat C and Circling Cat C visibilities ¼ mile.  
DME/DME RNP-0.3 NA. Helicopter visibility reduction below 1 SM NA.  
Night landing: Rwy 32 NA. Circling NA to Rwys 5 and 23.

MISSED APPROACH: Climb to 2200 direct VULCE and hold.

AWOS-3 <b>118.275</b>	HOUSTON CENTER <b>128.15 350.3</b>	UNICOM <b>122.8 (CTAF) 0</b>
--------------------------	---------------------------------------	---------------------------------



2200	VULCE	TOVEE	4 NM Holding Pattern
↑	✧	140° →	2200
PIPIY 2 NM to RWY 32	WIVAM	TOVEE	
≤ 3.00° TCH 45	1600	320°	
RWY 32	700	319°	
2 NM	2.8 NM	7 NM	
CATEGORY	A	B	C
LP MDA	340-1	310 (400-1)	NA
LNAV MDA	400-1	370 (400-1)	NA
CIRCLING	480-1 448 (500-1)	500-1 468 (500-1)	560-1½ 528 (600-1½)