

PORT LAVACA, TEXAS

AL-5904 (FAA)

20282

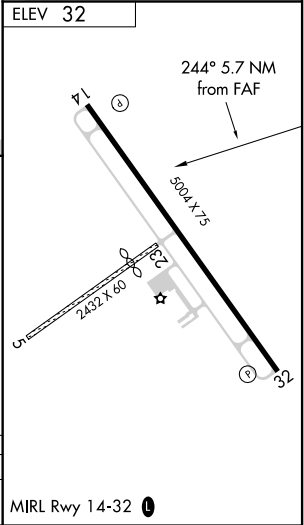
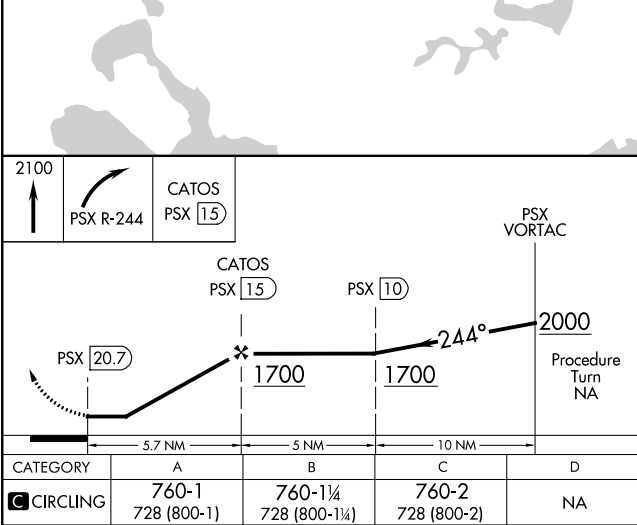
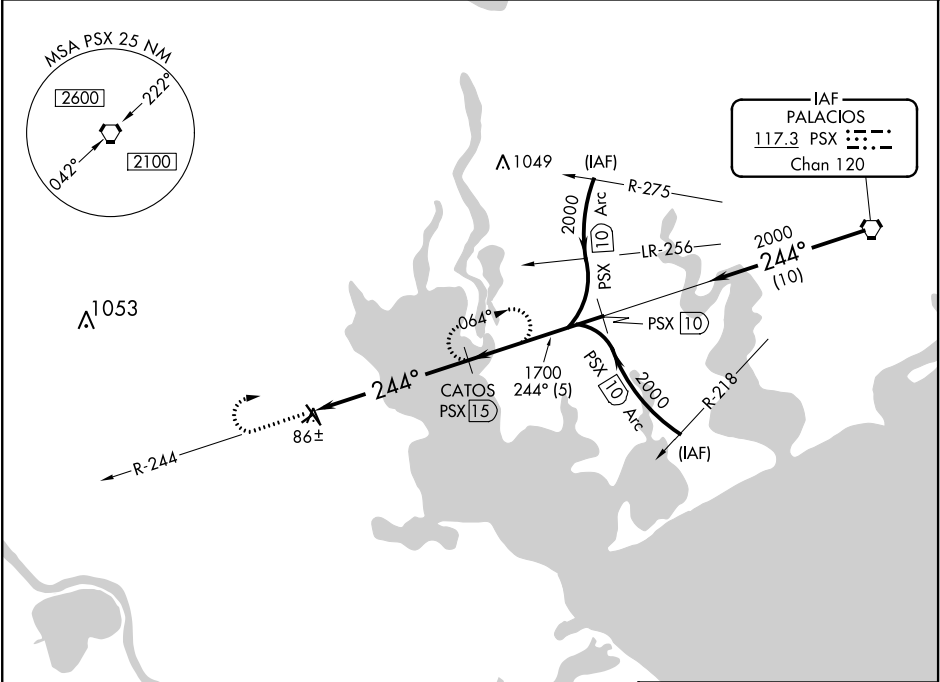
VORTAC PSX 117.3 Chan 120	APP CRS 244°	Rwy ldg TDZE Apt Elev N/A N/A 32
---	------------------------	--

VOR/DME-A
CALHOUN COUNTY (PKV)

⚠ When local altimeter setting not received, use Victoria altimeter setting. Circling NA to Rwy 5 and 23. Night landing: Rwy 32 NA.

MISSED APPROACH: Climb to 2100, then right turn via PSX VORTAC R-244 to CATOS/PSX 15 DME and hold.

AWOS-3 118.275	HOUSTON CENTER 128.15 350.3	UNICOM 122.8 (CTAF) 0
--------------------------	---------------------------------------	---------------------------------



PORT LAVACA, TEXAS
Amdt 4D 08OCT20

28°39'N-96°41'W

CALHOUN COUNTY (PKV)
VOR/DME-A

SC-5, 31 DEC 2020 to 28 JAN 2021

SC-5, 31 DEC 2020 to 28 JAN 2021