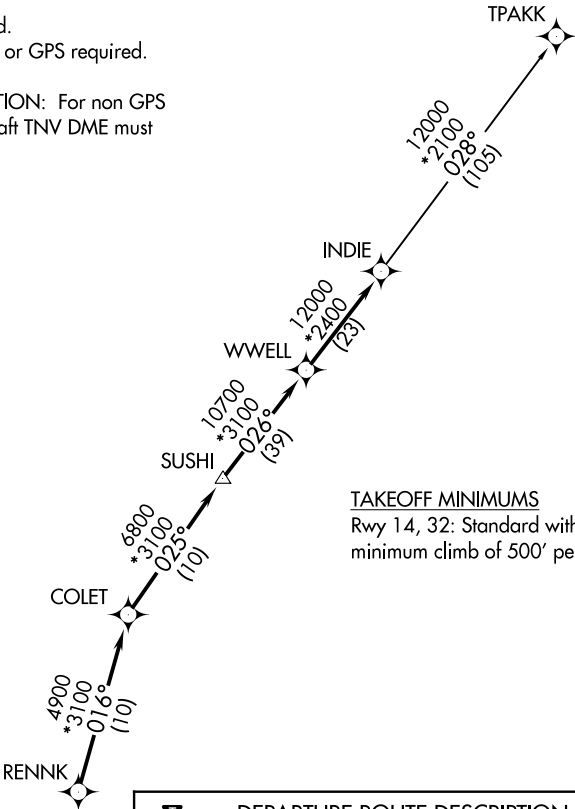


AWOS-3  
118.475  
CTAF  
122.7  
HOUSTON CENTER  
128.6 360.85

TOP ALTITUDE:  
ASSIGNED BY ATC

- NOTE: RADAR required.  
NOTE: DME/DME/IRU or GPS required.  
NOTE: RNAV 1.  
NOTE: TPAKK TRANSITION: For non GPS equipped aircraft TNV DME must be operational.



TAKEOFF MINIMUMS  
Rwy 14, 32: Standard with a minimum climb of 500' per NM to 600.

DEPARTURE ROUTE DESCRIPTION

TAKEOFF RWY 14: Climb on heading 148° to 600 for RADAR vectors to RENNK, thence . . . .  
TAKEOFF RWY 32: Climb on heading 328° to 600 for RADAR vectors to RENNK, thence . . . .  
. . . . on track 016° to COLET, then on track 025° to SUSHI, then on track 026° to WWELL, then on track 026° to INDIE, then on (transition). Maintain ATC assigned altitude. Expect filed altitude 10 minutes after departure.

TPAKK TRANSITION (INDIE7.TPAKK)

NOTE: Chart not to scale.