

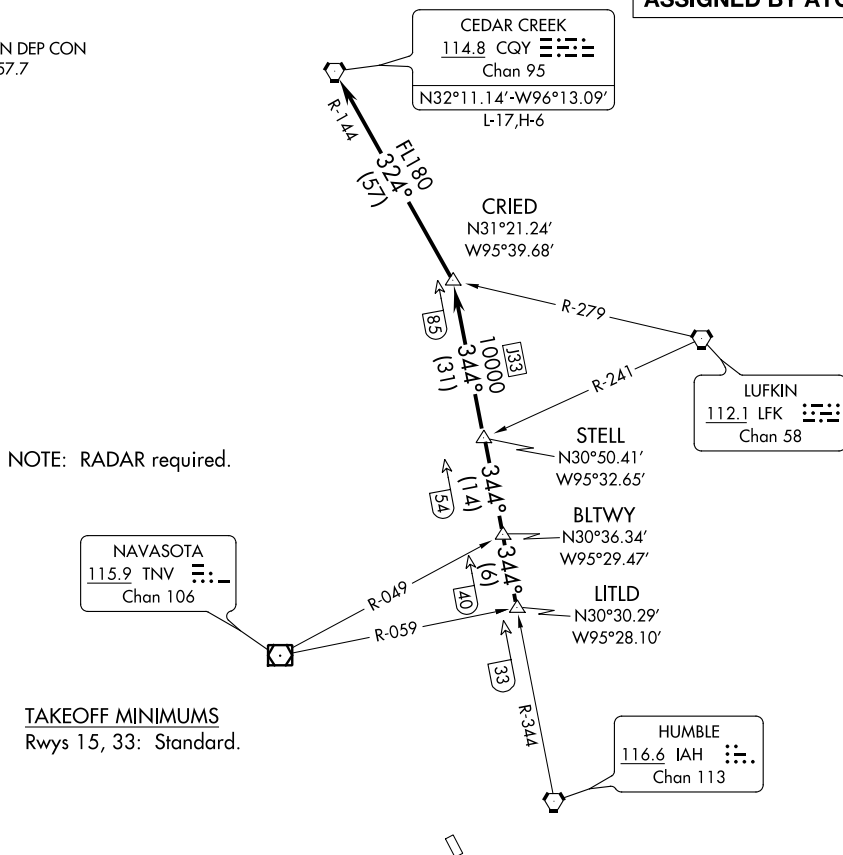
CRIED NINE DEPARTURE

AL-6079 (FAA)

WEST HOUSTON (IWS)  
HOUSTON, TEXAS

CLNC DEL	121.15
CTAF	123.05
HOUSTON DEP CON	123.8 257.7

**TOP ALTITUDE:  
ASSIGNED BY ATC**



NOTE: RADAR required.

TAKEOFF MINIMUMS  
Rwys 15, 33: Standard.

NOTE: Chart not to scale.

SC-5, 31 DEC 2020 to 28 JAN 2021

## DEPARTURE ROUTE DESCRIPTION

**TAKEOFF ALL RUNWAYS:** When entering controlled airspace, climb on assigned heading for RADAR vectors to LITLD INT. Maintain ATC assigned altitude. Expect filed altitude 10 minutes after departure, thence . . . .

... on IAH R-344 to STELL INT, then on IAH R-344 to CRIED INT then left turn on CQY R-144 to CQY VORTAC.

CRIED NINE DEPARTURE

(CRIED9.CRIED) 22JUN17

HOUSTON, TEXAS  
WEST HOUSTON (IWS)