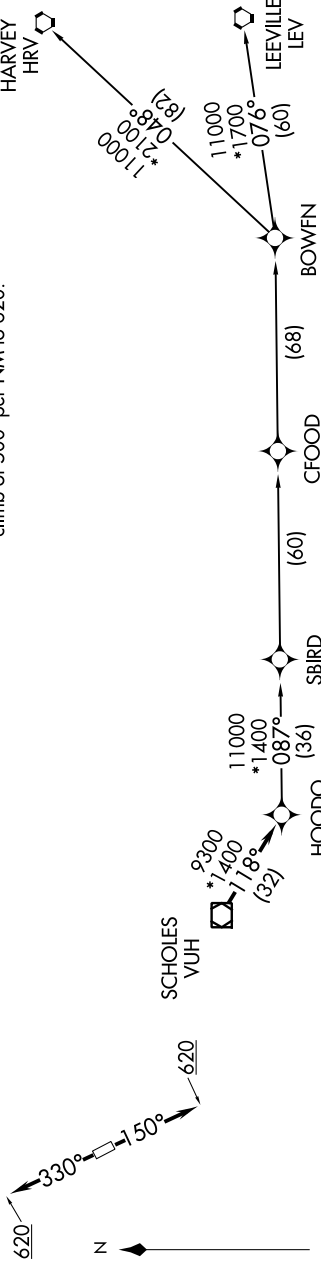


CINC DEL
121.15
CTAF
123.05
HOUSTON DEP CON
123.8 257.7

- NOTE: RNAV 1.
- NOTE: RADAR required.
- NOTE: ATC assigned only.
- NOTE: DME/DME/IRU or GPS required.
- NOTE: For non-GPS equipped aircraft, LCH, ILA, TBD, and LEV DME's must be operational.

TAKEOFF MINIMUMS

Rwy 15, 33: Standard with minimum climb of 500' per NM to 620.



TOP ALTITUDE:
ASSIGNED BY ATC

DEPARTURE ROUTE DESCRIPTION

TAKEOFF RWY 15: Climb heading 150° to 620, for RADAR vectors to VUH VOR/DME, thence

TAKEOFF RWY 33: Climb heading 330° to 620, for RADAR vectors to VUH VOR/DME, thence

. . . . on track 118° to HOODO, then on (transition). Maintain ATC assigned altitude.
Expect filed altitude 10 minutes after departure.

- BOWFN TRANSITION (HOODO6.BOWFN)
- CFOOD TRANSITION (HOODO6.CFOOD)
- HARVEY TRANSITION (HOODO6.HRV)
- LEEVILLE TRANSITION (HOODO6.LEV)
- SBIRD TRANSITION (HOODO6.SBIRD)