

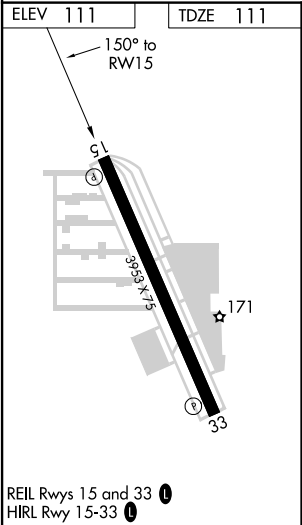
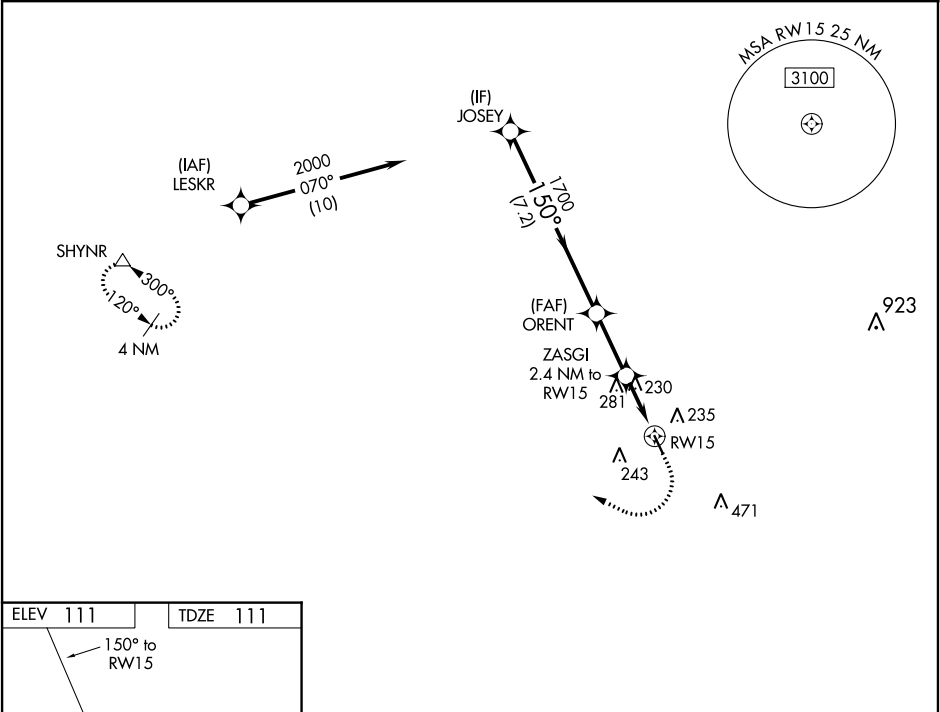
WAAS CH 40429 W15A	APP CRS 150°	Rwy Idg TDZE 111 Apt Elev 111
--	------------------------	---

RNAV (GPS) RWY 15

WEST HOUSTON (IWS)

RNP APCH.	MISSED APPROACH: Climb to 600 then climbing right turn to 2000 direct SHYNR and hold.
<div><div>Procedure NA at night.</div><div>Rwy 15 helicopter visibility reduction below 1 SM NA.</div><div>Use George Bush Intercontinental/Houston altimeter setting.</div></div>	

HOUSTON APP CON 123.8 257.7	CLNC DEL 121.15	UNICOM 123.05 (CTAF) 0
---------------------------------------	---------------------------	----------------------------------



VGSI and descent angles not coincident (VGSI Angle 3.70/TCH 43).				
JOSEY		ORENT		SHYNR
2000		1700		△
150°		3.00° TCH 45		
7.2 NM		2.5 NM		2.4 NM
CATEGORY	A	B	C	D
LP MDA	540-1	429 (500-1)	540-1¼ 429 (500-1¼)	NA
LNAV MDA	580-1	469 (500-1)	580-1¾ 469 (500-1¾)	NA
CIRCLING	600-1	489 (500-1)	640-1½ 529 (600-1½)	NA