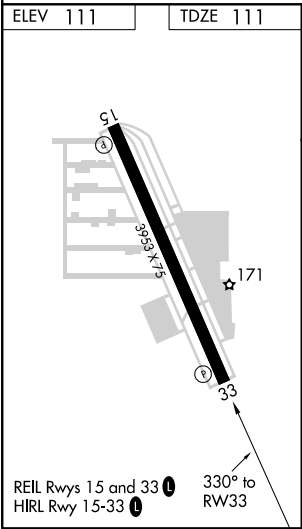
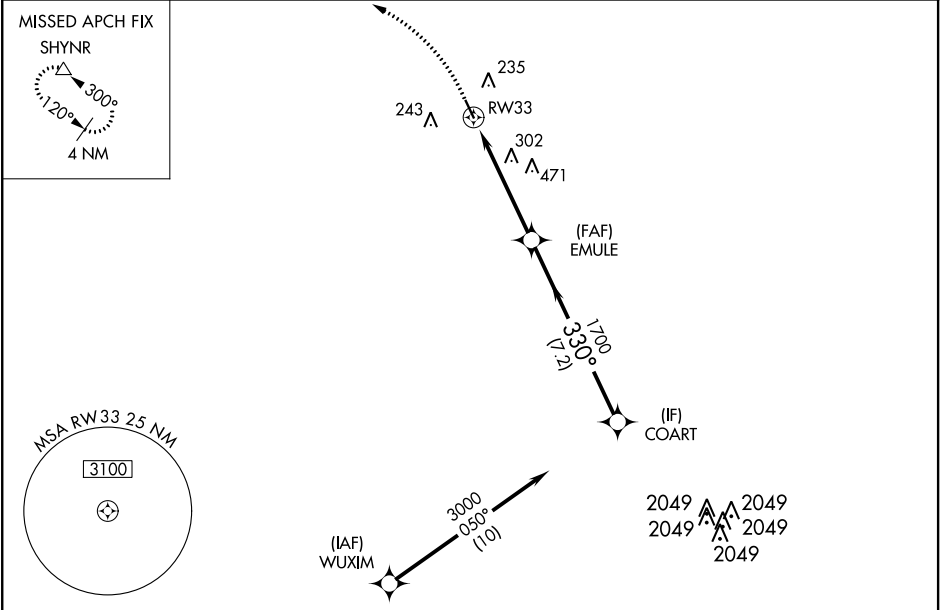


APP CRS	Rwy Idg	3953
330°	TDZE	111
	Apt Elev	111

RNAV (GPS) RWY 33
WEST HOUSTON (IWS)

RNP APCH.	MISSED APPROACH: Climbing left turn to 2000 direct SHYNR and hold.
Rwy 33 helicopter visibility reduction below 1 SM NA. Use George Bush Intercontinental/Houston altimeter setting. Circling Rwy 15 NA at night.	

HOUSTON APP CON 123.8 257.7	CLNC DEL 121.15	UNICOM 123.05 (CTAF) 0
--------------------------------	--------------------	---------------------------



2000	SHYNR	VGSI and descent angles not coincident (VGSI Angle 3.70/TCH 44).		
		EMULE	COART	3000
		RW33	1700	
		4.9 NM	7.2 NM	
CATEGORY	A	B	C	D
LNAV MDA	600-1	489 (500-1)	600-1 3/8 489 (500-1 3/8)	NA
CIRCLING	600-1	489 (500-1)	640-1 1/2 529 (600-1 1/2)	NA

SC-5, 31 DEC 2020 to 28 JAN 2021

SC-5, 31 DEC 2020 to 28 JAN 2021