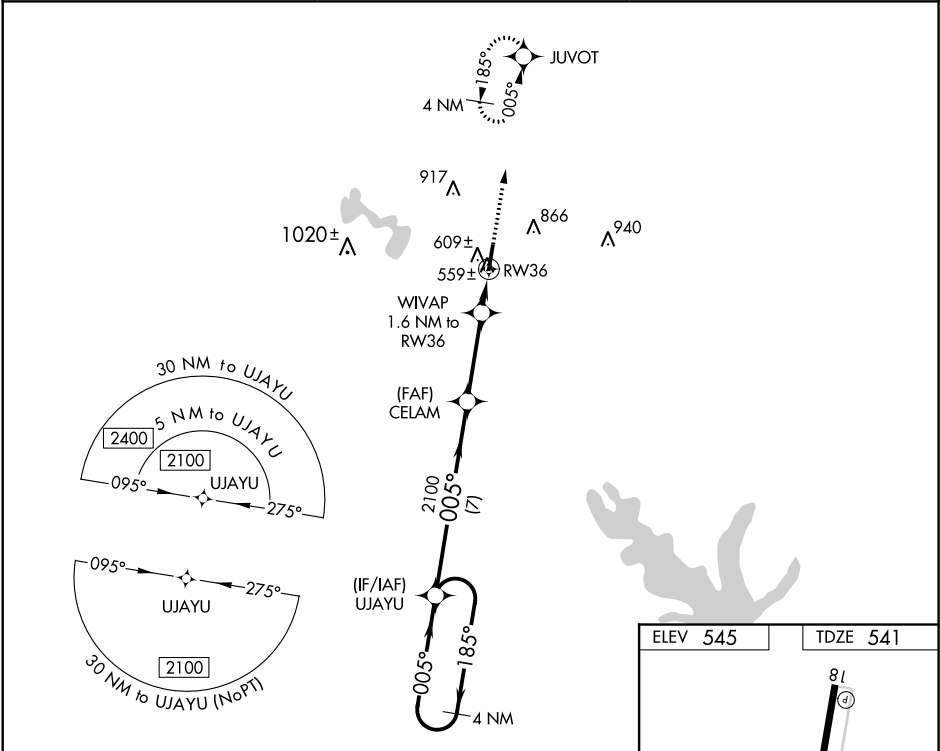


WAAS CH 69228 W36A	APP CRS 005°	Rwy Idg TDZE 541 Apt Elev 545
--	------------------------	---

RNAV (GPS) RWY 36
MEXIA-LIMESTONE COUNTY (LXY)

<p>▽ DME/DME RNP-0.3 NA. Helicopter visibility reduction below ¾ SM NA. Obtain local altimeter setting on CTAF; when not received, use Waco Rgnl altimeter setting and increase all MDA 100 feet; increase LP Cat C visibility ½ mile and LNAV and circling Cat C visibility ¼ mile.</p> <p>⚠ NA</p>	<p>MISSED APPROACH: Climb to 2400 direct JUVOT and hold.</p>
--	---

AWOS-3 127.275	WACO APP CON 127.65 352.0	UNICOM 122.8 (CTAF)
--------------------------	-------------------------------------	-------------------------------



4 NM Holding Pattern		VGSI and descent angles not coincident (VGSI Angle 3.00/TCH 24).		2400	JUVOT
UJAYU		CELAM		WIVAP	1.6 NM to RW36
2100	185°	005°	2100	3.00°	TCH 40
7 NM		3.2 NM		1.6 NM	
CATEGORY	A	B	C	D	
LP MDA	860-1	319 (400-1)		NA	
LNAV MDA	880-1	339 (400-1)		NA	
CIRCLING	960-1 415 (500-1)	1000-1 456 (500-1)	1180-1¾ 636 (700-1¾)	NA	

