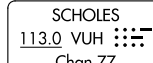


ILS or LOC RWY 17
TEXAS GULF COAST RGNL (LBX)

MISSED APPROACH: Climb to 600 then climbing left turn to 3000 on VUH VOR/DME R-243 to DELVE/VUH 22.1 DME and hold.

T For inop ALS, increase S-LOC 17 Cat C/D visibility to $\frac{7}{8}$ SM.
A Circling NA east of Rwy 17-35.

Procedure NA for arrival
on VUH VOR/DME
airway radials 243 CW 273.

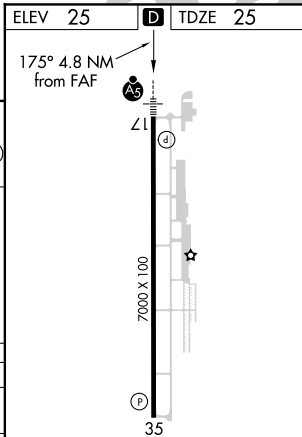


2017A

DELVE
VUH 22.1

113.0 VUH
R-243-
Chan 77

LOCALIZER 109.1
I-LBX
Chan 28

MIRL Rwy 17-35 **L**

SC-5, 31 DEC 2020 to 28 JAN 2021