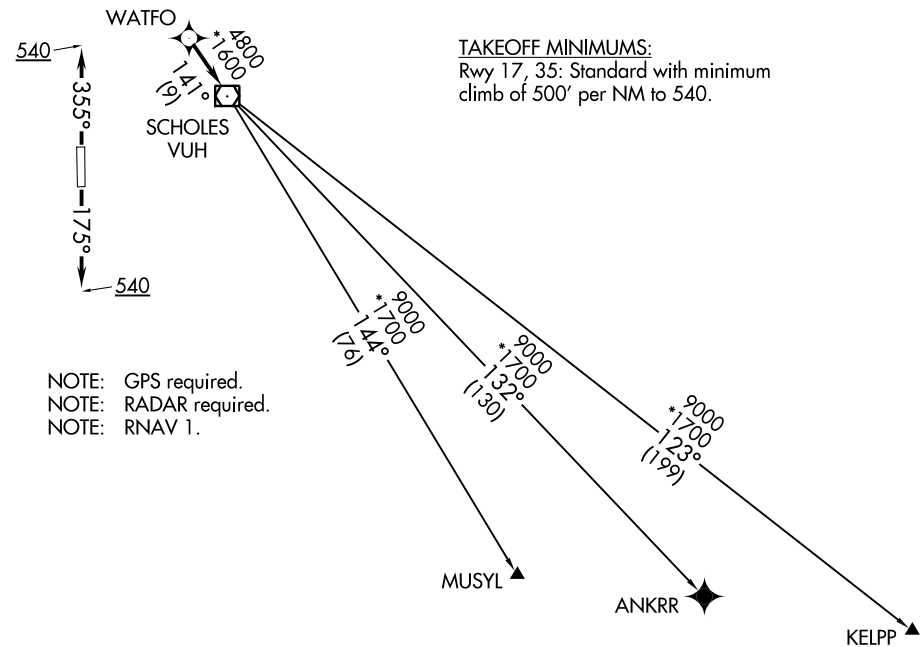


ASOS
119.925
CTAF
123.0
CLNC DEL
125.2
HOUSTON DEP CON
134.45 284.0

TOP ALTITUDE:
ASSIGNED BY ATC



NOTE: GPS required.
NOTE: RADAR required.
NOTE: RNAV 1.

NOTE: Chart not to scale.



DEPARTURE ROUTE DESCRIPTION

TAKEOFF RWY 17: Climb on heading 175° to 540, for RADAR vectors to WATFO, thence. . . .

TAKEOFF RWY 35: Climb on heading 355° to 540, for RADAR vectors to WATFO, thence. . . .

. . . on track 141° to VUH VOR/DME, then on (transition). Maintain ATC assigned altitude. Expect filed altitude 10 minutes after departure.

ANKRR TRANSITION (WATFO5.ANKRR)
KELPP TRANSITION (WATFO5.KELPP)
MUSYL TRANSITION (WATFO5.MUSYL)