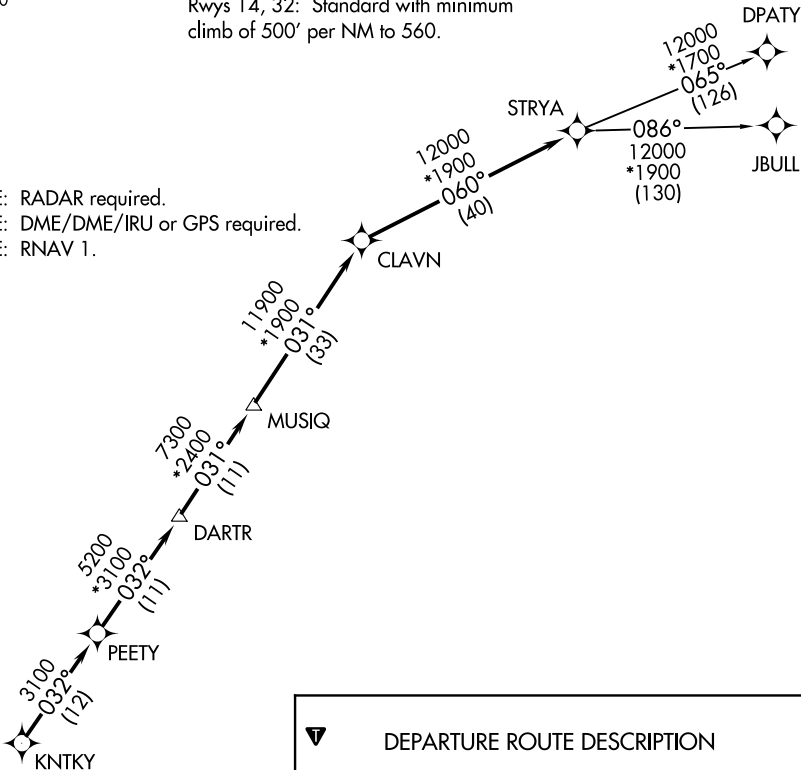


ASOS  
118.525  
CTAF  
122.8  
CLNC DEL  
124.0  
HOUSTON DEP CON  
134.45 284.0

TOP ALTITUDE: ASSIGNED BY ATC

TAKEOFF MINIMUMS  
Rwys 14, 32: Standard with minimum  
climb of 500' per NM to 560.

NOTE: RADAR required.  
NOTE: DME/DME/IRU or GPS required.  
NOTE: RNAV 1.

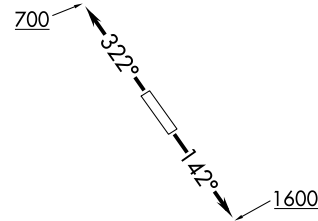


DEPARTURE ROUTE DESCRIPTION

TAKEOFF RWY 14: Climb heading 142° to 1600 for  
RADAR vectors to KNTKY, thence . . .  
TAKEOFF RWY 32: Climb heading 322° to 700 for  
RADAR vectors to KNTKY, thence . . .

. . . on track 032° to PEETY, then on track 032° to  
DARTR, then on track 031° to MUSIQ, then on track  
031° to CLAVN, then on track 060° to STRYA, then  
on (transition). Maintain ATC assigned altitude.  
Expect filed altitude 10 minutes after departure.

DPATY TRANSITION (STRYA7.DPATY)  
JBULL TRANSITION (STRYA7.JBULL)



NOTE: Chart not to scale.