

ASOS  
118.525  
CLNC DEL  
124.0  
CTAF  
122.8  
HOUSTON DEP CON  
134.45 284.0

TOP ALTITUDE:  
ASSIGNED BY ATC

NOTE: RADAR required.  
NOTE: DME/DME/IRU or GPS required.  
NOTE: RNAV 1.

TAKEOFF MINIMUMS

Rwy 14, 32: Standard with minimum  
climb of 500' per NM to 560.

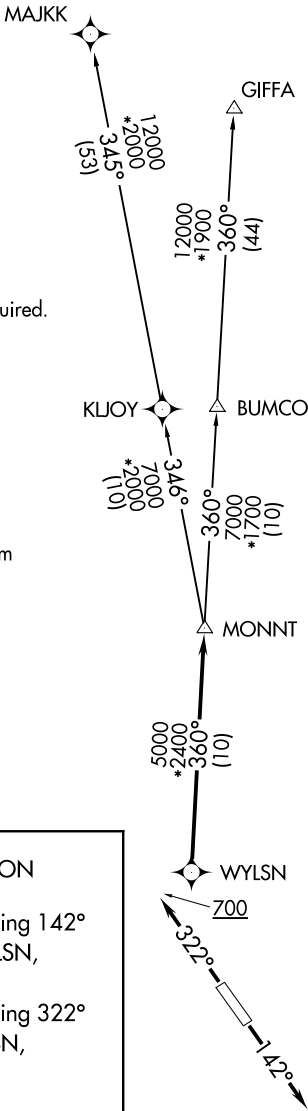
DEPARTURE ROUTE DESCRIPTION

TAKEOFF RWY 14: Climb on heading 142°  
to 1600 for RADAR vectors to WYLSN,  
thence. . .

TAKEOFF RWY 32: Climb on heading 322°  
to 700 for RADAR vectors to WYLSN,  
thence. . .

. . . on track 360° to MONNT, then on  
(transition). Maintain ATC assigned altitude.  
Expect filed altitude 10 minutes after departure.

GIFFA TRANSITION (WYLSN7.GIFFA)  
MAJKK TRANSITION (WYLSN7.MAJKK)



NOTE: Chart not to scale.