

WAAS CH 56429 W14A	APP CRS 135°	Rwy Idg TDZE Apt Elev	5006 678 678
--	------------------------	-----------------------------	---

RNAV (GPS) RWY 14

CHEROKEE COUNTY (J50)

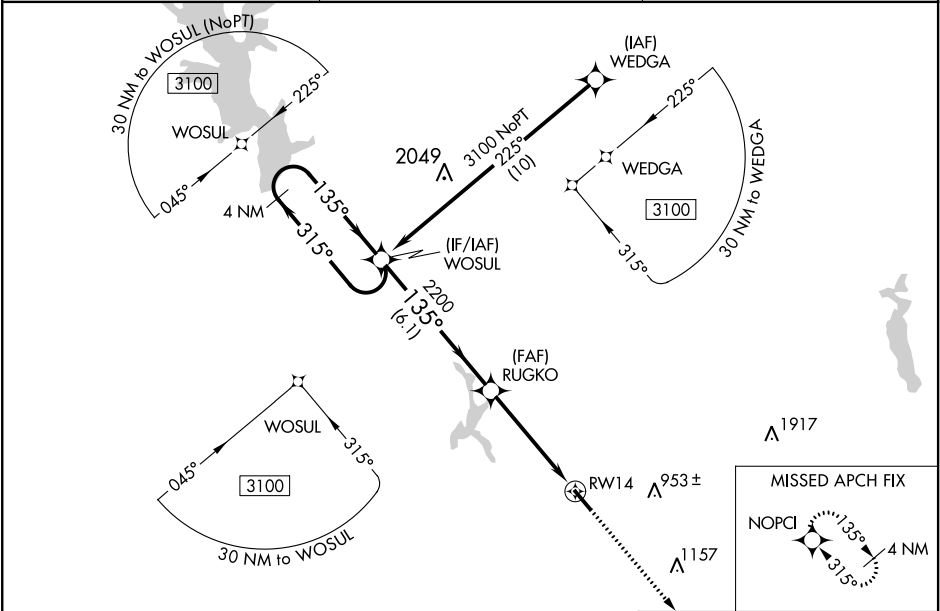
▼

▲

Baro-VNAV NA when using Nacogdoches altimeter setting. For uncompensated Baro-VNAV systems, LNAV/VNAV NA below -16°C (4°F) or above 54°C (130°F). When local altimeter setting not received, use Nacogdoches altimeter setting and increase DA 118 feet, increase MDA 120 feet and LPV visibility all Cats ½ mile, LNAV/VNAV visibility all Cats ¼ mile, LNAV visibility Cat C ¾ mile. DME/DME RNP-0.3 NA. VDP NA with Nacogdoches altimeter setting.

MISSED APPROACH: Climb to 3100 direct NOPCI and hold.

AWOS-3 119.075	LONGVIEW APP CON ★ 128.75 379.15	UNICOM 122.7 (CTAF) ①
--------------------------	--	---------------------------------



4 NM Holding Pattern WOSUL		3100		NOPCI	
GP 3.00° TCH 30		RUGKO		*LNAV only.	
3100		2200		*1.2 NM to RW14	
6.1 NM		3.5 NM		1.2	
CATEGORY	A	B	C	D	
LPV DA	928-1	250 (300-1)		NA	
LNAV/VNAV DA	928-1	250 (300-1)		NA	
LNAV MDA	1080-1	402 (500-1)	1080-1½ 402 (500-1½)	NA	
CIRCLING	1080-1 402 (500-1)	1140-1 462 (500-1)	1140-1½ 462 (500-1½)	NA	

REIL Rwy 14

MIRL Rwy 14-32 ①