

(BLTWY6.BLTWY) 19115
BLTWY SIX DEPARTURE (RNAV)

AL-6575 (FAA)

HOUSTON-SOUTHWEST (AXH)
HOUSTON, TEXAS

AWOS-3
123.625
CLNC DEL
120.8
CTAF
123.0
HOUSTON DEP CON
123.8 257.7

TOP ALTITUDE:
ASSIGNED BY ATC

NOTE: RADAR required.
NOTE: DME/DME/IRU or GPS required.
NOTE: RNAV 1.

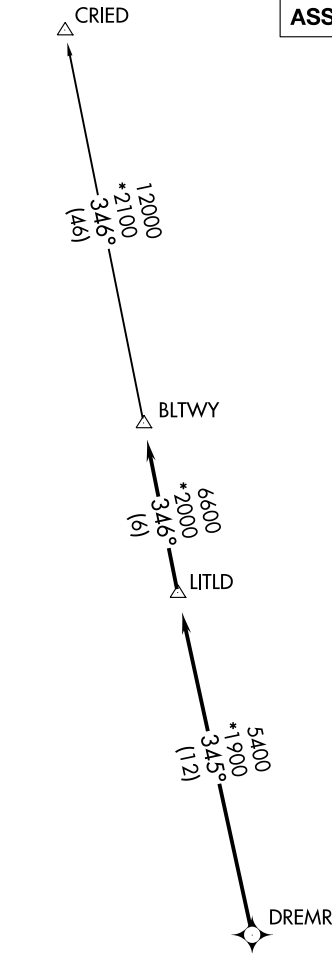
TAKEOFF MINIMUMS
Rwy 9, 27: Standard with minimum climb of
500' per NM to 580.

▼ DEPARTURE ROUTE DESCRIPTION

TAKEOFF RWY 9: Climb heading 089°
to 2000 for RADAR vectors to DREMR,
thence
TAKEOFF RWY 27: Climb heading 269°
to 2200 for RADAR vectors to DREMR,
thence

...on track 345° to LITLD, then on track
346° to BLTWY, then on (transition).
Maintain ATC assigned altitude. Expect
filed altitude 10 minutes after departure.

CRIED TRANSITION (BLTWY6.CRIED)



NOTE: Chart not to scale.