

(ELD9.ELD) 18032

AL-6575 (FAA)

HOUSTON-SOUTHWEST (AXH)
HOUSTON, TEXAS

EL DORADO NINE DEPARTURE

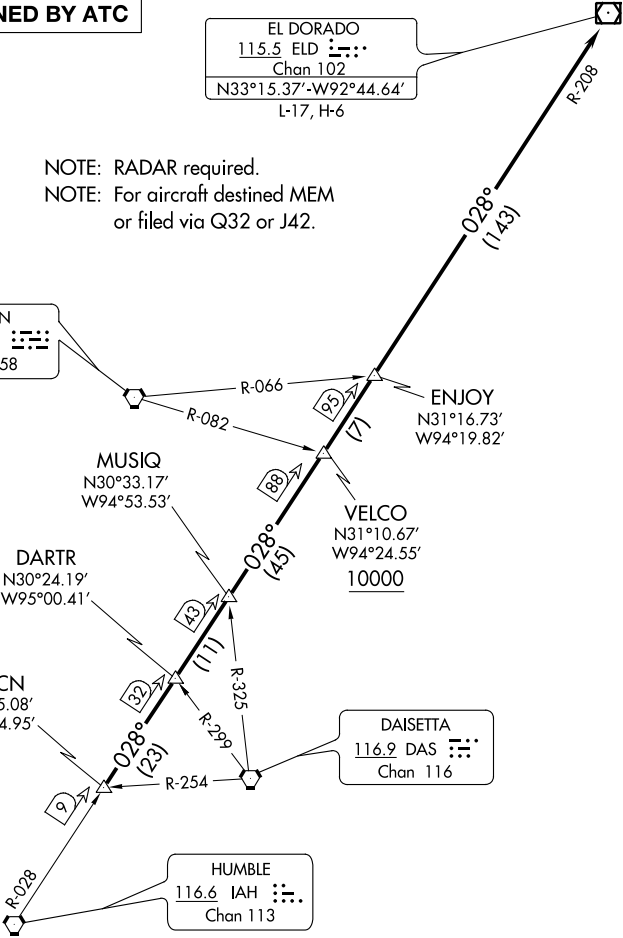
AWOS-3
123.625
CLNC DEL
120.8
CTAF
123.0
HOUSTON DEP CON
123.8 257.7

TOP ALTITUDE:
ASSIGNED BY ATC

EL DORADO
115.5 ELD
Chan 102
N33°15.37'-W92°44.64'
L-17, H-6

NOTE: RADAR required.
NOTE: For aircraft destined MEM
or filed via Q32 or J42.

LUFKIN
112.1 LFK
Chan 58



TAKEOFF MINIMUMS
Rwys 9, 27: Standard.

NOTE: Chart not to scale.

(NARRATIVE ON FOLLOWING PAGE)

EL DORADO NINE DEPARTURE
(ELD9.ELD) 22JUN17

HOUSTON, TEXAS
HOUSTON-SOUTHWEST (AXH)

SC-5, 31 DEC 2020 to 28 JAN 2021

SC-5, 31 DEC 2020 to 28 JAN 2021