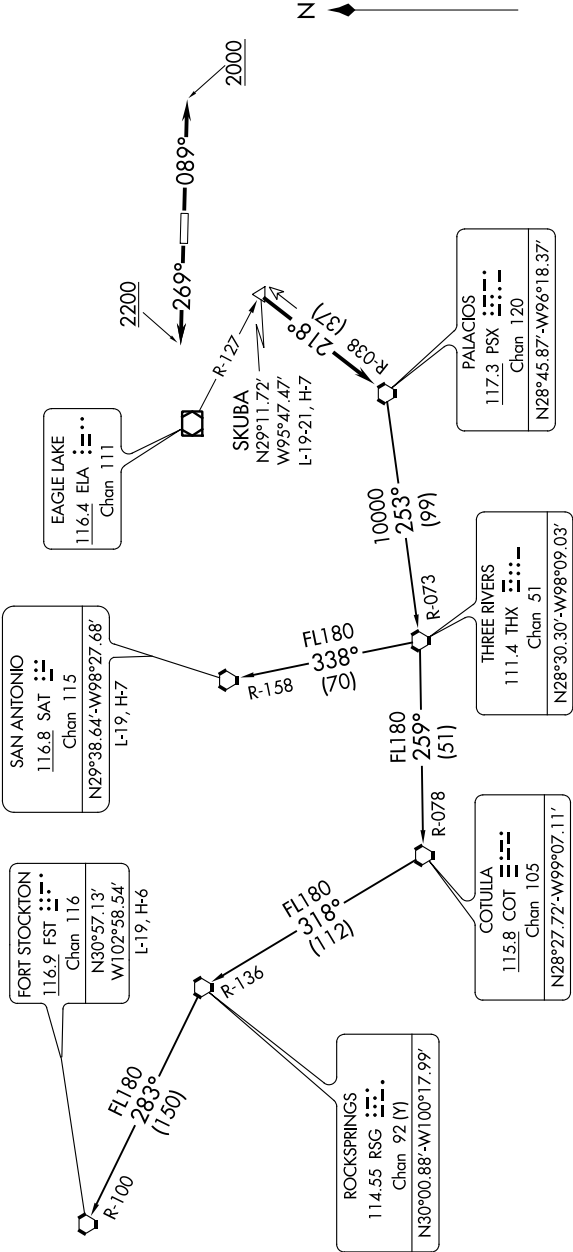


SC-5, 31 DEC 2020 to 28 JAN 2021

AWOS-3  
123.625  
CLNC DEL  
120.8  
CTAF  
123.0  
HOUSTON DEP CON  
123.8 257.7

TOP ALTITUDE:  
ASSIGNED BY ATC

TAKEOFF MINIMUMS  
Rwy 9, 27: Standard.



(NARRATIVE ON FOLLOWING PAGE)

NOTE: RADAR required.  
NOTE: Chart not to scale.

SC-5, 31 DEC 2020 to 28 JAN 2021