

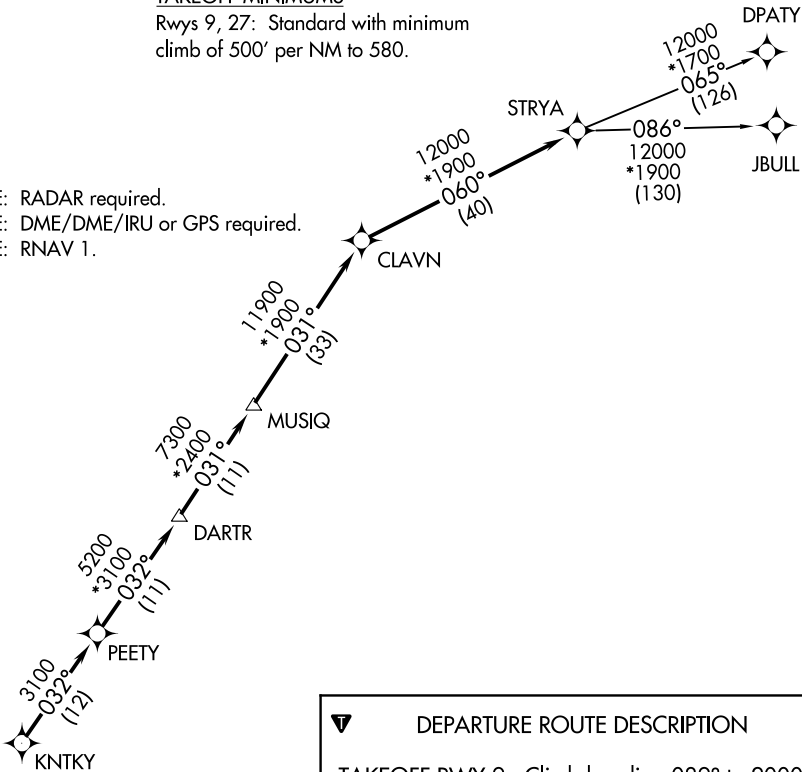
AWOS-3
123.625
CTAF
123.0
CLNC DEL
120.8
HOUSTON DEP CON
123.8 257.7

TOP ALTITUDE: ASSIGNED BY ATC

TAKEOFF MINIMUMS

Rwys 9, 27: Standard with minimum climb of 500' per NM to 580.

- NOTE: RADAR required.
NOTE: DME/DME/IRU or GPS required.
NOTE: RNAV 1.



DEPARTURE ROUTE DESCRIPTION

TAKEOFF RWY 9: Climb heading 089° to 2000 for RADAR vectors to KNTKY, then

TAKEOFF RWY 27: Climb heading 269° to 2200 for RADAR vectors to KNTKY, then

. . . . on track 032° to PEETY, then on track 032° to DARTR, then on track 031° to MUSIQ, then on track 031° to CLAVN, then on track 060° to STRYA, then on (transition). Maintain ATC assigned altitude. Expect filed altitude 10 minutes after departure.

DPATY TRANSITION (STRYA7.DPATY)
JBULL TRANSITION (STRYA7.JBULL)

NOTE: Chart not to scale.