

AWOS-3  
123.625  
CLNC DEL  
120.8  
CTAF  
123.0  
HOUSTON DEP CON  
123.8 257.7

- NOTE: RADAR required.  
NOTE: DME/DME/IRU or GPS required.  
NOTE: RNAV 1.

TAKEOFF MINIMUMS

Rwy 9, 27: Standard with minimum  
climb of 500' per NM to 580.



DEPARTURE ROUTE DESCRIPTION

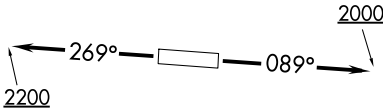
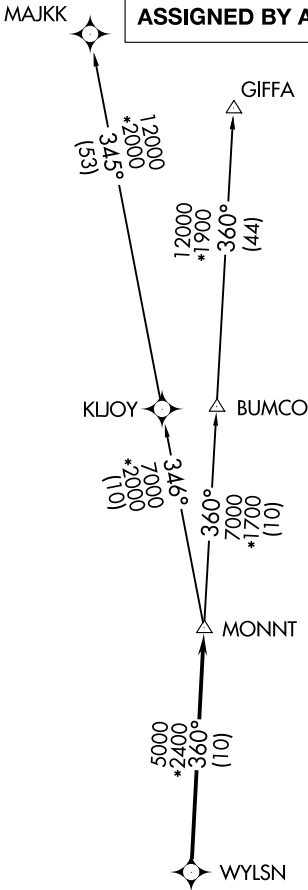
TAKEOFF RWY 9: Climb on heading 089°  
to 2000 for RADAR vectors to WYLSN,  
thence. . . .

TAKEOFF RWY 27: Climb on heading 269°  
to 2200 for RADAR vectors to WYLSN,  
thence. . . .

. . . .on track 360° to MONNT, then on  
(transition). Maintain ATC assigned altitude.  
Expect filed altitude 10 minutes after departure.

GIFFA TRANSITION (WYLSN7.GIFFA)  
MAJJK TRANSITION (WYLSN7.MAJKK)

TOP ALTITUDE:  
ASSIGNED BY ATC



NOTE: Chart not to scale.

SC-5, 31 DEC 2020 to 28 JAN 2021

SC-5, 31 DEC 2020 to 28 JAN 2021