

APP CRS	Rwy Idg	3252
146°	TDZE	391
	Apt Elev	391

RNAV (GPS) RWY 15

CALDWELL MUNI (RWV)

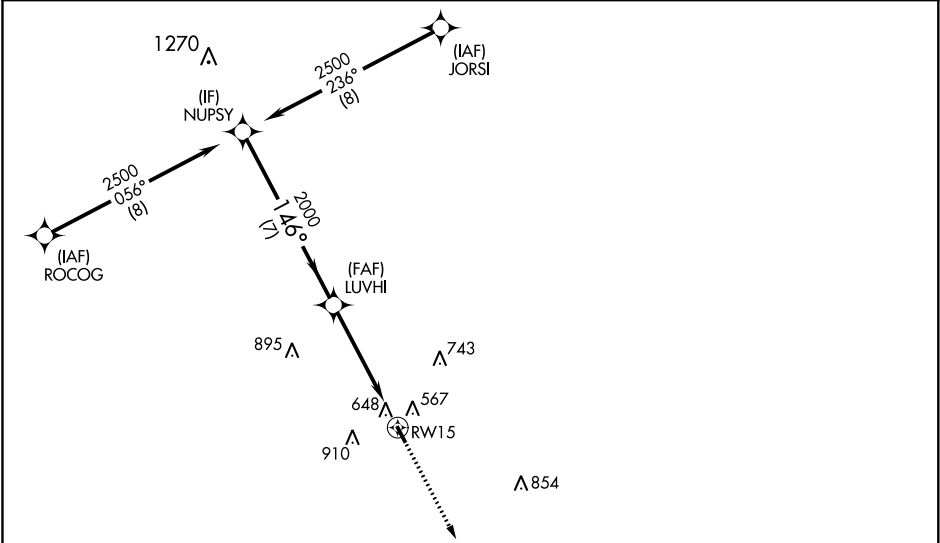
⚠

⚠

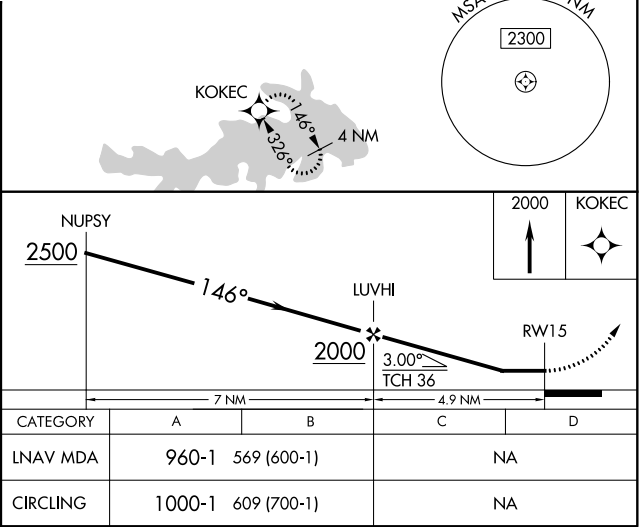
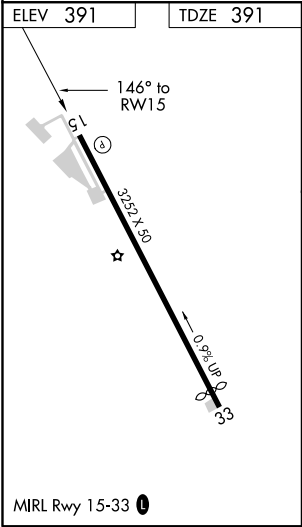
When local altimeter setting not received, use College Station altimeter setting and increase all MDA 60 feet. Circling NA east of Rwy 15-33. DME/DME RNP-0.3 NA. Procedure NA at night. Helicopter visibility reduction below 1 SM NA.

MISSED APPROACH: Climb to 2000 direct KOKEC and hold.

AWOS-3 118.35	HOUSTON APP CON 134.3 360.85	CTAF 122.9
------------------	---------------------------------	---------------



RADAR REQUIRED



SC-5, 31 DEC 2020 to 28 JAN 2021

SC-5, 31 DEC 2020 to 28 JAN 2021